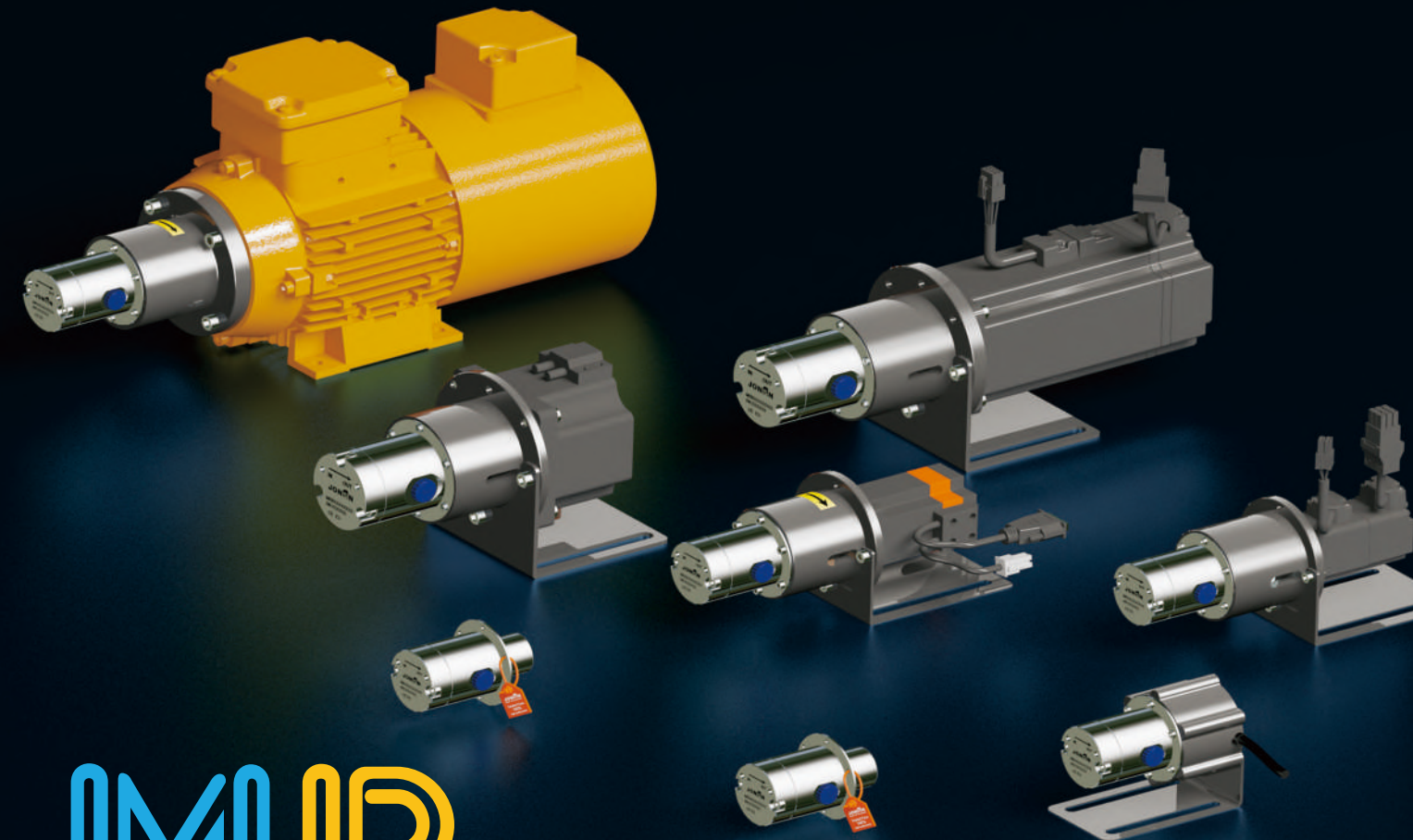


JONSN · 琼森
MICRO GEAR PUMPS

JONSN · 琼森
MICRO GEAR PUMPS



MIR

PRECISION MICRO GEAR PUMP

精密级微型齿轮泵

用心、专注做好每一台齿轮泵就是我们的创业初心

Attentively focusing on each high precision micro gear pumps is our initial aspiration

■ 上海琼森流体设备有限公司 (国内销售)
SHANGHAI JONSN FLUID EQUIPMENT CO., LTD

地址: 上海市松江区久富经济开发区金马路59号3幢403
电话: 021-34720020 传真: 021-67689517
网址: www.jonsn.cn 邮箱: lijun@jonsn.cn

■ 琼森 (赣州) 流体科技有限公司 (赣州工厂)
JONSN (GANZHOU) FLUID TECHNOLOGY CO., LTD

网址: www.jonsn.com
国际贸易: sales@jonsn.com
地址: 江西省赣州市经济技术开发区经三路6号厂房2

ENTERPRISE PROFILE
企业简介

”

上海琼森流体设备有限公司成立于2010年，是一家以世界知名进口泵为技术背景的公司，设有两个事业部，分别为JONSN品牌泵事业部和进口泵贸易事业部，公司拥有一支优秀的研发创新团队，为客户提供集设计、生产、销售于一体的流体输送解决方案。

2019年上海琼森流体设备有限公司做出新的规划，在中部地区成立新工厂。2020年新工厂正式落户于赣州市国家级经济技术开发区。琼森逆势组建新的技术开发团队，与国外企业合作，采用国外先进的制造工艺和精益化管理，选用优质原材料,设计和制造符合高性价比、易安装维护、模块化设计精密级齿轮计量泵。

Shanghai JONSN Fluid Equipment Co.,Ltd. was established in 2010. It is a company with world-renowned imported pumps as its technical background. It has two business divisions, namely the JONSN brand pump division and the imported pump trading division. An excellent R&D and innovation team provides customers with fluid transportation solutions that integrate design, production and sales.

In 2019, Shanghai JONSN Fluid Equipment Co., Ltd. made a new plan to establish a new factory in the central region. In 2020, the new factory will be officially settled in Ganzhou National Economic and Technological Development Zone. JONSN bucked the trend and formed a new technology development team, cooperated with foreign companies, adopted foreign advanced manufacturing technology and lean management, selected high-quality raw materials, designed and manufactured precision gear metering pumps with high cost performance, easy installation and maintenance.

“



DEVELOPMENT PATH
发展历程

2010

成立上海琼森流体设备有限公司
公司核心管理层有泵行业外资企业多年的从业背景
代理欧美进口齿轮泵、磁力泵、桶泵、隔膜泵
及高温、高压、强腐蚀性工况特种泵

2011

成立 JONSN 精密级齿轮泵研发中心，启用ERP管理系统
JONSN 全系列桶泵完成设计，测试通过
获得桶泵专利证书，CE认证

2012

上海琼森流体设备有限公司由贸易型转为生产型企业
同年 JONSN 桶泵系列产品陆续投产，并销往国外市场
JONSN 精密级微型齿轮泵完成设计

2013

JONSN 精密级微型齿轮泵样机验证通过
设计寿命、工艺参数远超欧美同类产品
公司全面聚焦于高精密齿轮泵研发设计生产

2014

JONSN 精密级微型齿轮泵陆续下线小批量生产
DX系列高粘度齿轮泵开启设计规划

2015

JONSN 琼森商标注册成功，申请发明专利2项，实用新型专利7项
JONSN 精密级微型齿轮泵定型批量生产
成功应用并出口欧美市场
成功签约中石化，中海油，天津杰瑞等企业

2016

DX系列高粘度齿轮泵定型生产
同年公司齿轮泵业绩实现年产值3000多万

2017

导入产品编码追踪溯源体系
6S现场管理体系

2018

企业战略定位升级为“可信赖的优质泵供应商”
专注把控质量，实现100%出厂测试合格，做值得信赖的好产品

2019

JONSN 精密级齿轮泵获CE认证成功，应用于造船业SCR尾气处理系统日本船级社工作人员实地验厂测试通过，获日本船级社《ClassNK》许可证成为新能源锂电行业流体控制系统解决方案供应商

2020

启动全新LOGO品牌标识和品牌理念
专注高精密齿轮泵研发生产
与英国勃朗兹集团成立合资公司，新工厂正式落户赣州
公司启动DP系列高粘度齿轮计量泵研发

2021 至今

启动德国莱茵ISO9001质量管理体系认证工作
DP系列高粘度齿轮计量泵首款样泵进入测试验证阶段

COOPERATIVE PARTNER
合作伙伴



MR系列
精密级磁力齿轮泵
MR series precision magnetic gear pump

DP系列
中高粘度精密级齿轮计量泵
DP series medium and high viscosity precision gear metering pump

DX系列
高温高粘度齿轮计量泵
DX series high temperature and high viscosity gear metering pump

代理
BRONTZ内啮合齿轮泵
Acting as an agent for BRONTZ internal gear pumps

期待与您的合作
Look forward to working with you

HONORARY PATENT
荣誉资质

JONSN公司专注于精密齿轮泵的技术开发，从事着精密生产工作。熟练的技能和工艺是我们主要的工作的特征。每一台精密级齿轮泵的诞生都体现了工匠之美。他们对产品的严格要求，出色的表现为公司的发展做出了贡献。

公司先后获得了7项实用新型专利，2个发明专利，同时获得德国Tüv Rheinland ISO9001质量管理体系认证，CE认证、美国ABS船级社、法国BV船级社、日本船级社认证等。

We focus on the technical development of precision gear pumps. We are engaged in precision production. Skilled technology and craftsmanship are the main characteristics of our work. The birth of every Jonsn precision gear pump embodies the beauty of craftsmen. Their strict requirements for products and outstanding performance have contributed to the development of the company.

Jonsn company has successively obtained 7 utility model patents, 2 invention patents, meanwhile we have obtained the German TÜV Rheinland ISO9001 quality management system certification, CE certification, ABS certification, BV certification, Nippon Kaiji Kyokai certification, etc.

TÜV Rheinland ISO9001
quality management certification

BV certification

ABS certification

2 invention patents
7 utility model patents

RoHS Test Report

CE certification

MR SERIES MICRO GEAR PUMPS
MR系列精密级齿轮泵特点

琼森齿轮泵技术沉淀多年
已经成为高端制造行业在线输送关键性控制设备

1 无脉动精确输送 Pulsation-free precise conveying

正位移容积泵，通过齿轮来提供持续的精确的流体输送,配合伺服或步进电机使用，输送精度可达+/-0.5%。

Positive displacement pumps provide continuous and accurate fluid delivery through gears. When used with servo or stepper motors, the delivery accuracy can reach +/-0.5%.

2 真空吸料强、输送压力高、平稳 Strong vacuum suction high conveying pressure, stable

可以实现低粘度液体中高压输送。

Can realize low-viscosity liquid medium and high-pressure transportation.

3 无泄漏 No leakage

磁力驱动和静态O型圈密封可保证泵内介质与外界隔离。

Magnetic drive and static O-ring seal can ensure that the medium in the pump is isolated from the outside world.

4 做工精良、模块化设计 Excellent workmanship, modular design

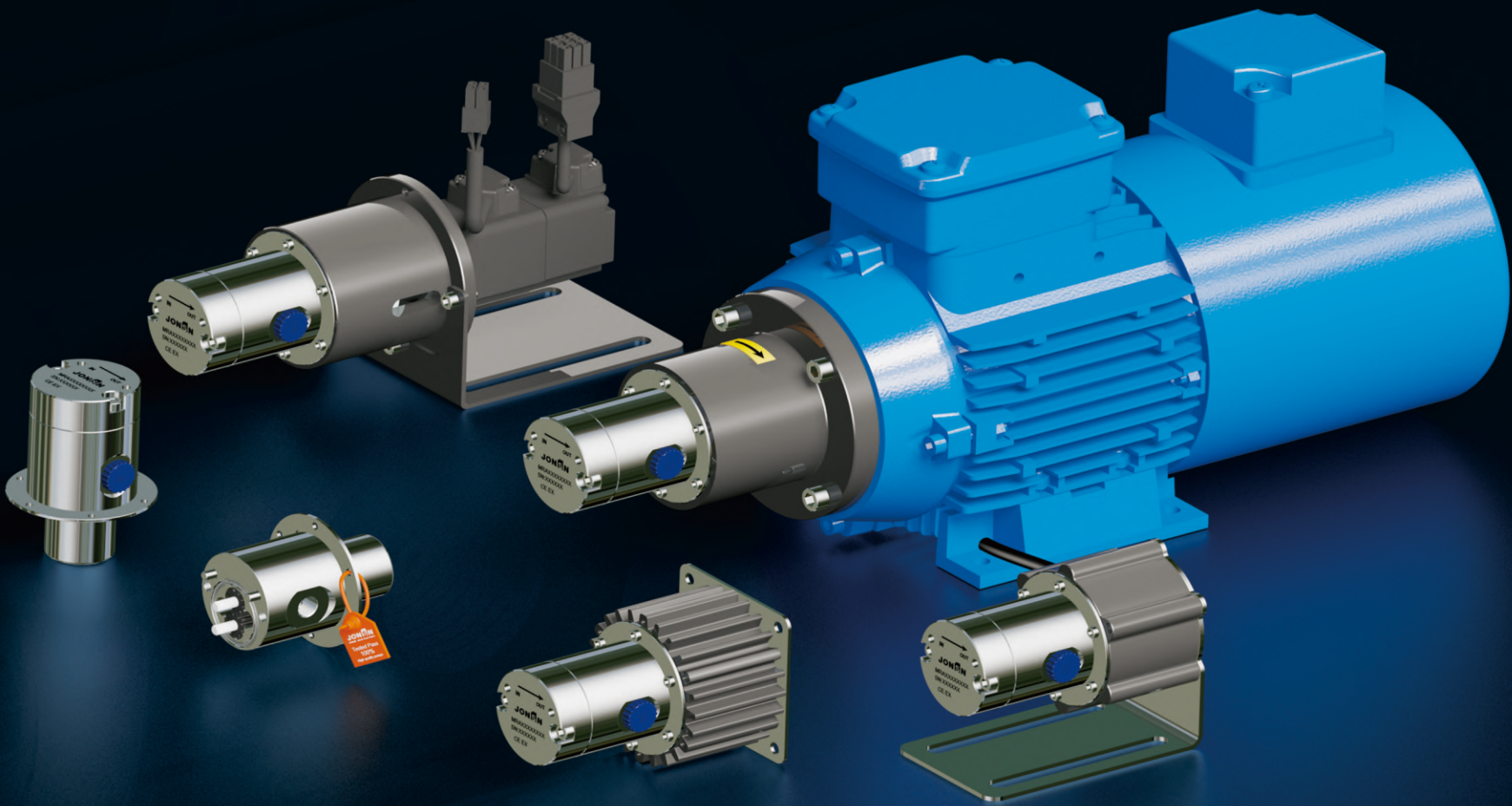
齿轮轴采用特种改性PEEK材质+热处理工艺+高强度氧化锆陶瓷制成，轴承采用特种改性PEEK复合纳米级陶瓷配方和专用的加工成型工艺,经测试验证：在极端工况空转（干运转）2小时后，流量依然保持高线性度。

The whole series of gear shafts adopt special modified PEEK material + heat treatment process + high-strength zirconia ceramics. It has been tested and verified to maintain high linearity after 2 hours of idling (dry running) under extreme conditions.

5 选型专业化 Selection specialization

数万台微型齿轮泵运用经验，积累了大量实验数据，专业化的选型评估，为您制定解决方案，降低风险。

Thousands of micro gear pumps have experience in the application, accumulated a large amount of experimental data, and professional selection and evaluation, to formulate solutions for you to reduce risks.



性能参数
Performance parameter

流量范围	Flow range	0.001 - 64L/min	
入口压力	Inlet pressure	-0.98 - 25 bar	
压差	Differential pressure	0-25.5 bar 取决于物料粘度	Depends on material viscosity
温度	Temperature	-40 - 160℃ 其它温度可定制	Other temperatures can be customized
粘度范围	Viscosity range	0.4-3000cps	
最大密度	Maximum density	1.8	
电机可配	Motor can be equipped	交流电机、无刷直流、伺服、变频防爆电机	AC motors, Brushless DC, Servo Frequency conversion explosion-proof motor
进出口螺纹	Import and export thread	NPT1/8、NPT1/4、NPT3/8、NPT1/2、NPT3/4 or G1/8、G1/4、G3/8、G3/4	
非标定制	Non-standard customization	OEM机械设备配套、伺服系统定制	OEM mechanical equipment matching servo system customization

流量理论

Theoretical flow

精密齿轮泵 Pump		电机转速 Motor speed (rpm)				
订货号 Order No	口径 Size	750	960	1450	2850	3300
MRA5/13	1/8	0.150	0.192	0.290	0.570	0.660
MRA7/13		0.293	0.374	0.566	1.112	1.287
MRA10/13		0.450	0.576	0.870	1.710	1.980
MRA12/13		0.525	0.672	1.015	1.995	2.310
MRB10/16	1/4	0.750	0.960	1.450	2.850	3.300
MRB12/16		0.900	1.152	1.740	3.420	3.960
MRB17/16		1.275	1.632	2.465	4.845	5.610
MRB19/16		1.425	1.824	2.755	5.415	6.270
MRC15/22	3/8	1.800	2.304	3.480	6.840	
MRC20/22		2.625	3.360	5.075	9.975	
MRC8/37		3.000	3.840	5.800	11.400	
MRC12/37		4.500	5.760	8.700	17.100	
MRD25/30	1/2	5.250	6.720	10.150	19.950	
MRE18/37	3/4	6.750	8.640	13.050	25.650	
MRE24/37		9.000	11.520	17.400	34.200	
MRE34/37		12.750	16.320	24.650	48.450	
MRF34/39	1 1/4	16.500	21.120	31.900	62.700	

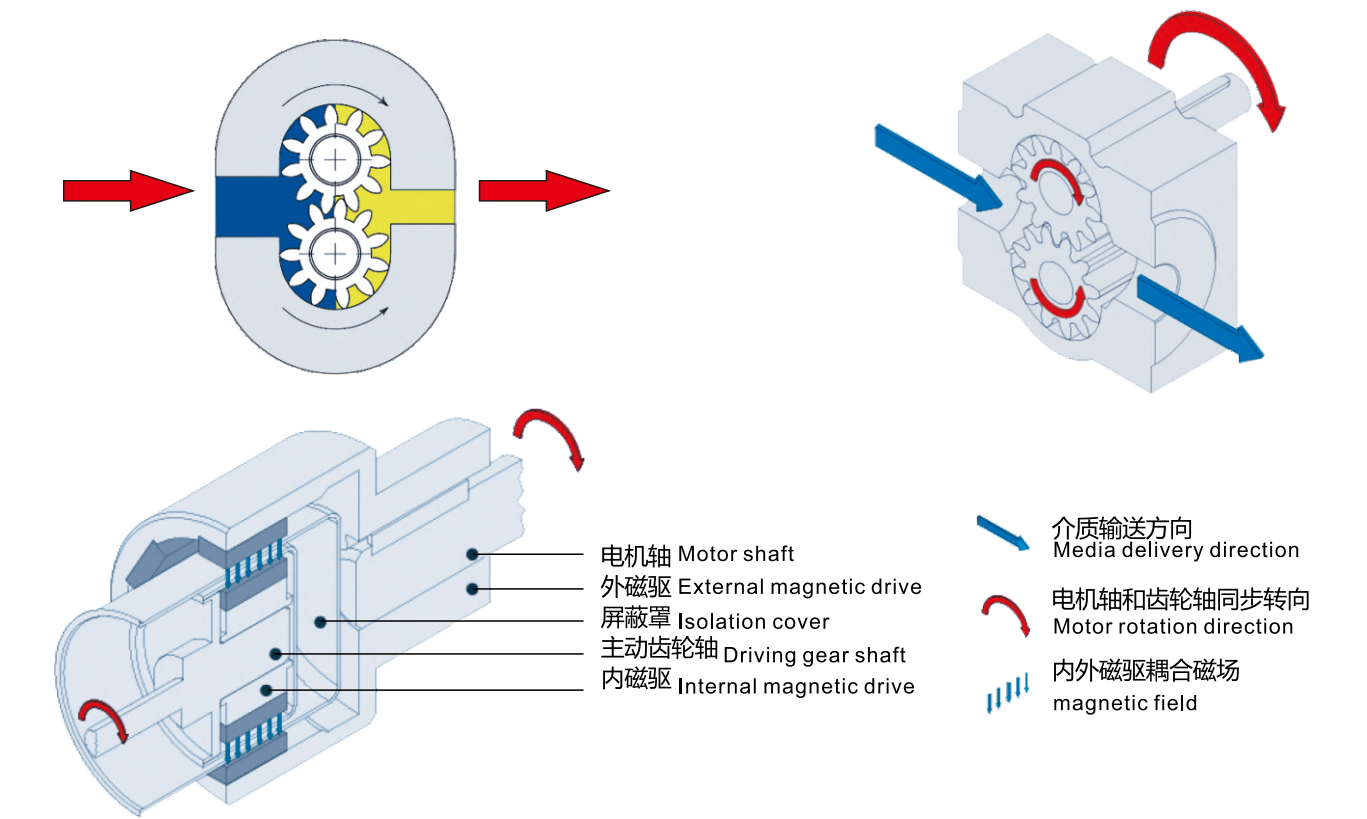
泵理论流量 Theoretical flow (L/min)

■ 注：以上流量数据是基于水为介质，泵出口无压力的情况测试，由于齿轮转动流量会有间隙损失，实际流量变化会根据介质粘度、压力和电机转速情况会有变化，测试数据告诉我们：介质粘度、进出口压差不变、只要电机转速是稳定，流量就是稳定的，流量的大小取决于电机输出转速和出口压力，所以选用一款高效稳定的电机至关重要。初次使用精密齿轮泵的用户，可下载我司选型数据表，将有关参数通过电话或邮件方式告知我们，我们拥有专业的泵和电机选型软件和数万台泵的应用经验，为你提供泵的详细的选型报告，可以为你制定专业系统解决方案，详情咨询销售人员。

■ Note: The above flow data is based on the fact that water is the medium and there is no pressure at the pump outlet. Since there is a gap loss due to the rotating flow of the gear, the actual flow rate changes according to the viscosity and pressure of the medium.And the motor speed will change, the test data tells us: medium viscosity, inlet and outlet pressure difference is unchanged, as long as the motor speed is stable, the flow is stable, the flow depends on the size, For the motor output speed and outlet pressure, it is important to choose an efficient and stable motor. For the users who use precision gear pumps the first time, you can download our selection data sheet and call or email us refer to the relevant parameters. We have professional pump and motor selection software and thousands of pumps application experience, we can provide you detailed pump performance curves and make specialized system solutions for you, please consult our sales for the details.

COMPLETELY SOLVE THE MEDIUM LEAKAGE MAGNETIC GEAR PUMPS

彻底解决介质泄漏的磁力驱动齿轮泵



配置编码

Configuration code

MR	A	18	S	Z	K	L	F
泵系列号 Pump serial	进出口螺纹 Import and export thread	排量 Displacement 毫升/转 cc/rev 例如：18=0.18cc/rev	泵体材质 Pump material S:316L P:PPS H:哈氏合金 (适用于酸性介质)	滑动轴承 Bearing K:PEEK F:PTFE	结构形式 Structure type L:进出口180°(标准) L:Import and export of 180° (standard) B:进出口90° B: Import and export of 90	静密封圈 O-Ring F: PTFE M: FKM E: EPDM P: 全氟醚 L: 氯丁橡胶	齿轮轴材质 Gear shaft material Z:齿轮PEEK+轴纳米陶瓷(适用于低粘度无磨蚀介质) Z: Gear PEEK + Nano-ceramic shaft (for low viscosity non-abrasive media) Standard K:齿轮PEEK+轴316(适用于中性低粘度无磨蚀介质) K:GearPEEK+shaft 316(for neutral low viscosity non-abrasive media) C:纳米陶瓷(适用于低粘度微细颗粒磨蚀介质) C:Nano-ceramic (for low viscosity fine particle abrasive media) S:合金(适用于润滑性较好的介质) S:Alloy (for medium with better lubricity)



PRODUCT APPLICATION INDUSTRY
产品应用行业

MR系列精密级微型磁力齿轮泵可用于：液体的微量输送、添加、润滑、喷雾、点胶、取样、喷码、增压、循环、涂布、喷涂、计量等输送系统。

适用于自动化及过程控制系统、微量输送系统、循环增压系统、自动加料（加药）系统、余热回收系统、取样设备（包括真空抽吸）、芯片加工设备、实验室设备、冷却系统（冷媒循环泵）、铸造机械、包装机械、清洗系统、助剂填加系统、化工计量系统、小试/中试装置等需要小流量、无脉冲、高线性度、高压差、无泄漏、精密计量、流量稳定输送场合。

MR series precision micro magnetic gear pump is applicable for: liquid micro-transfer, adding, lubricating, spraying, dispensing, sampling, coding, boosting, circulating, coating, painting, metering and other delivery systems. It is applicable to automation and process control systems, micro-transfer systems, circulating booster systems, automatic feeding (dosing) systems, waste heat recovery systems, sampling equipment (including vacuum suction), chip processing equipment, laboratory equipment, cooling systems (refrigerant circulating pump), foundry machinery, packaging machinery, cleaning system, additive adding system, chemical metering system, and small test/pilot plant, etc, where request small flow, pulsation free, high linearity, high pressure differential, 0 leakage, precision metering and stable flow rate.

小流量 Small flow	高压力 High pressure	高线性度 High linearity
计量准确 Accurate measurement	无脉动输送 Pulsation-free delivery	



生物医药行业
Biopharmaceutical industry



精细化工行业
Fine chemical industry



机械工业行业
Machinery Industry



化妆品行业
Cosmetics industry



食品加工行业
Food processing industry



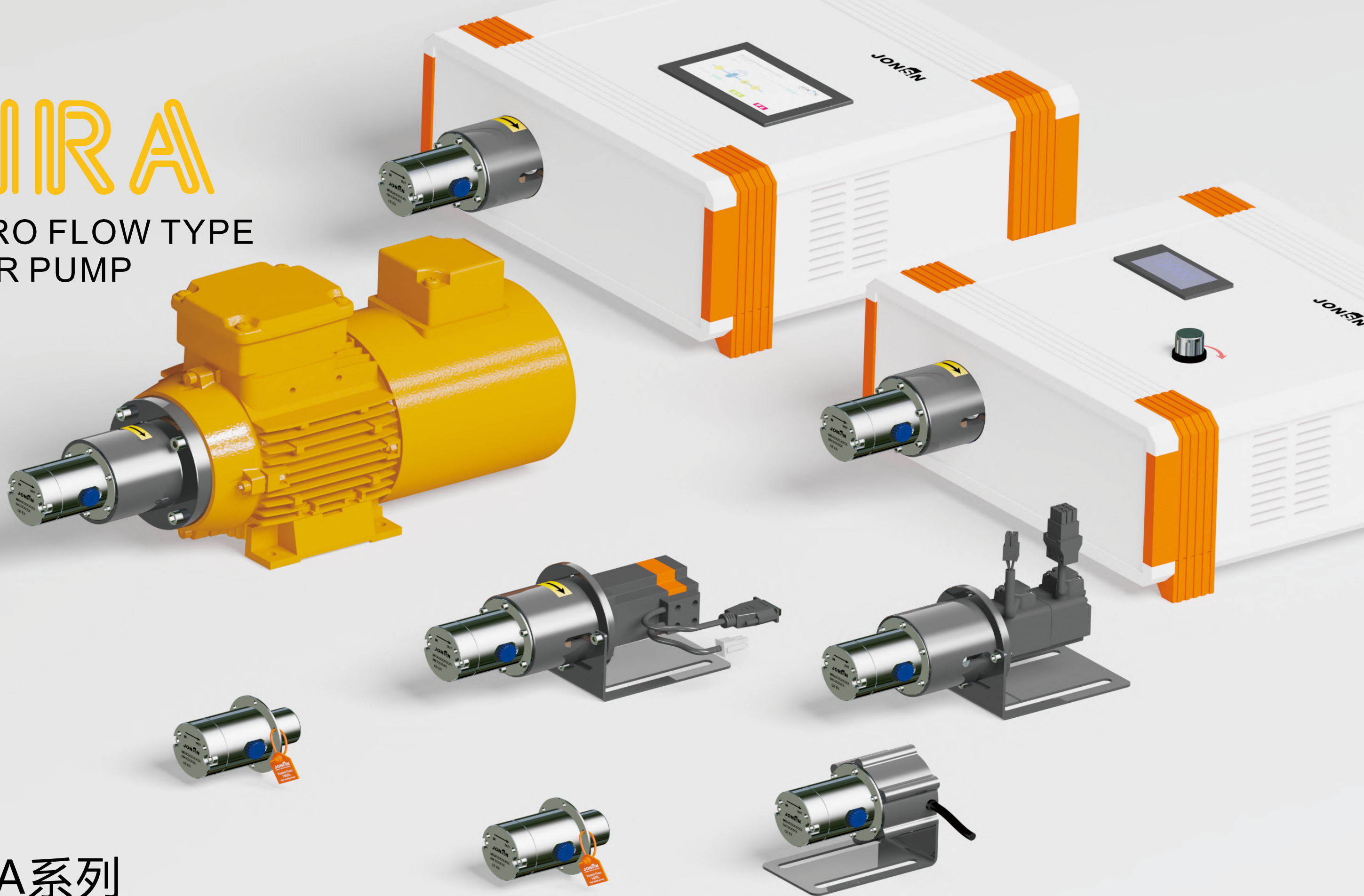
半导体电子行业
Semiconductor electronics industry

输送过的各种流体介质
Various fluid media transported

- 烧碱/Sodium hydroxide
- 四氢呋喃/Tetrahydrofuran
- 白油/White oil
- 助焊剂/Flux
- 甲醇/Methanol
- 去离子水/Deionized water
- 甘油/Glycerol
- 二异氰酸酯/Diisocyanate
- 丁基锂/Butyllithium
- 煤油/kerosene
- 甲基吡咯烷酮+三氧化二铝/NMP
- 双氧水/Hydrogen Peroxide
- 二氯甲烷/Dichloromethane
- 油墨/Ink
- 润肤剂/Emollients
- 吡啶/Pyridine
- 多元醇，聚合物/Polyols, polymers
- 粘合剂/Adhesives
- 石蜡油/Paraffin oil
- 纯水输送/Pure water transport
- 防冻液乙二醇/Ethylene glycol
- 尿素/Urea

MIRA

MICRO FLOW TYPE GEAR PUMP



MRA系列



MRA MICRO GEAR PUMPS

微小流量型
Micro flow type

可解决工况

流量100ml-2000ml/min

工作压差0.5-25bar

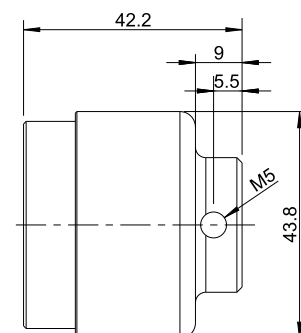
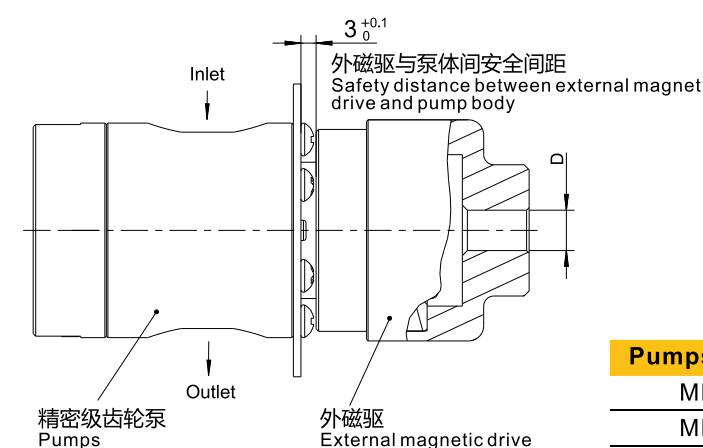
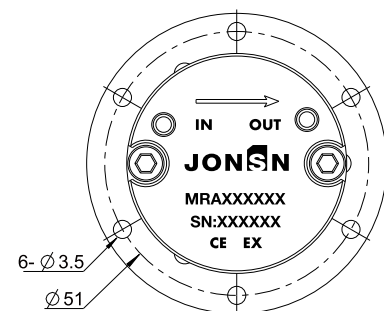
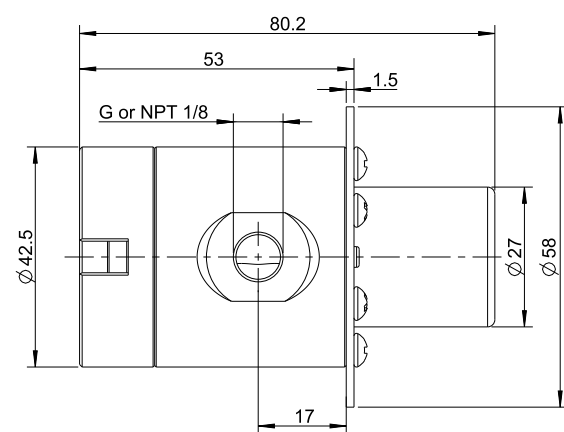
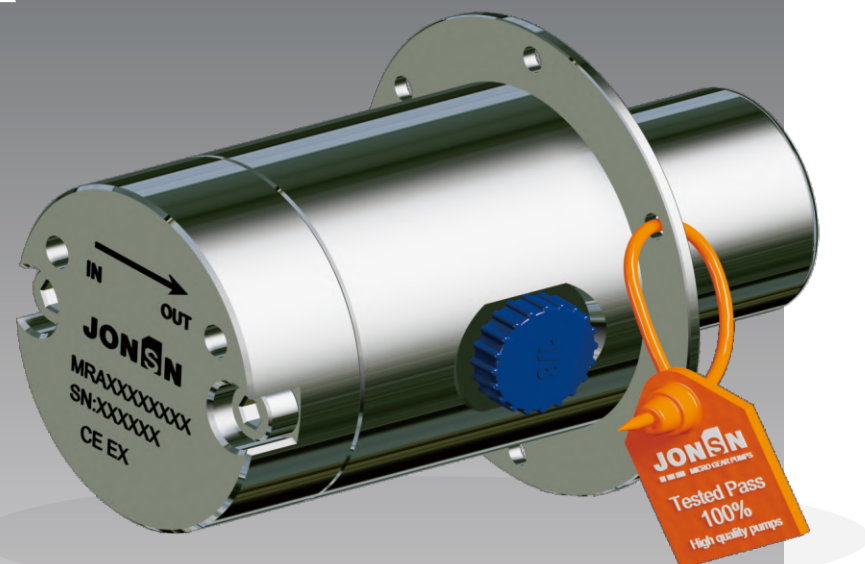
粘度0.4-3000m.Pas (近似于水)

Resolvable working conditions

Flow rate 100ml-2000ml/min

Working pressure difference 0.5-25bar

Viscosity 0.4-3000m.Pas (approximately water)



D
5
6
8
11
14
19

Pumps order NO.

MRA 5/13

MRA 7/13

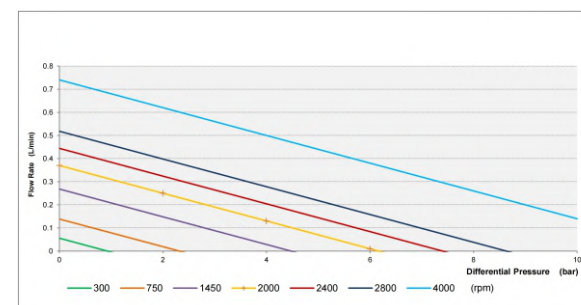
MRA 10/13

MRA 12/13

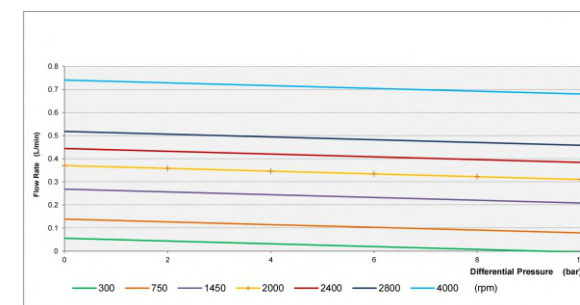
MRA泵头外形尺寸统一
MRA pumps head uniform dimensions

性能曲线 | Performance curve 通过调节电机转速，实现流量快慢，线性度高。

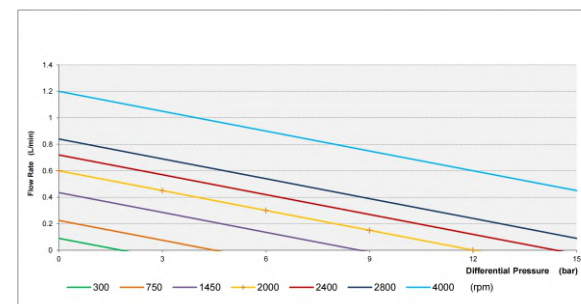
泵头 MRA 5/13
以1mPas. 40°C 水为测试条件



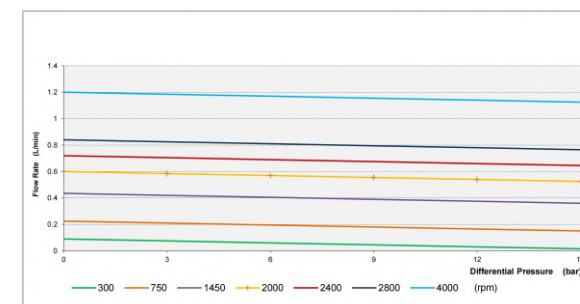
泵头 MRA 5/13
以100mPas. 40°C 油为测试条件



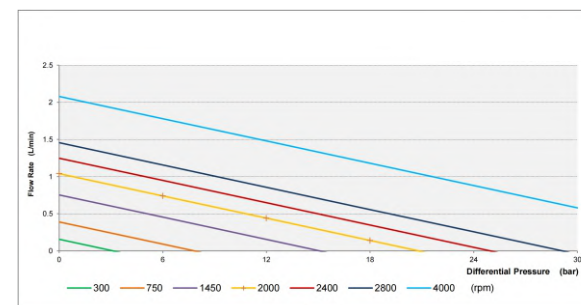
泵头 MRA 7/13
以1mPas. 40°C 水为测试条件



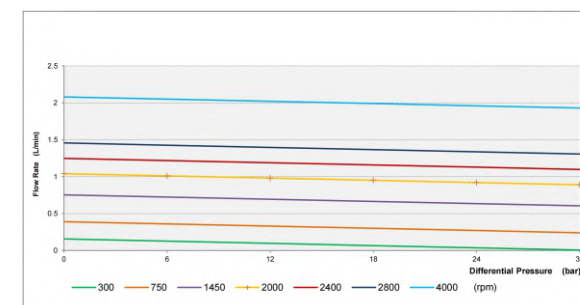
泵头 MRA 7/13
以100mPas. 40°C 油为测试条件



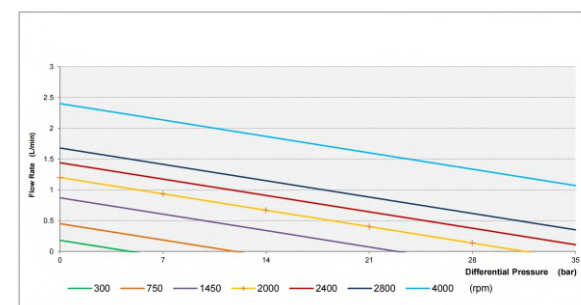
泵头 MRA 10/13
以1mPas. 40°C 水为测试条件



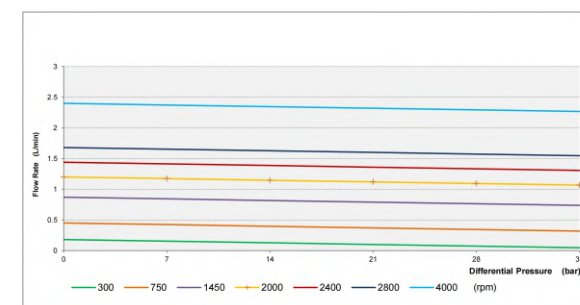
泵头 MRA 10/13
以100mPas. 40°C 油为测试条件



泵头 MRA 12/13
以1mPas. 40°C 水为测试条件



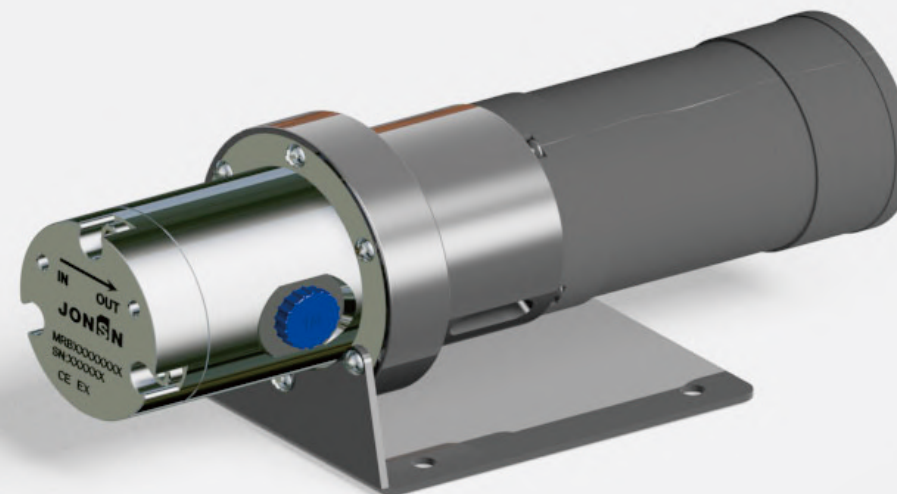
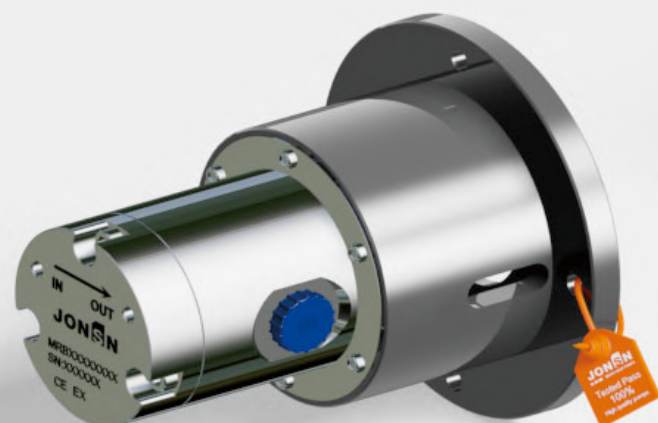
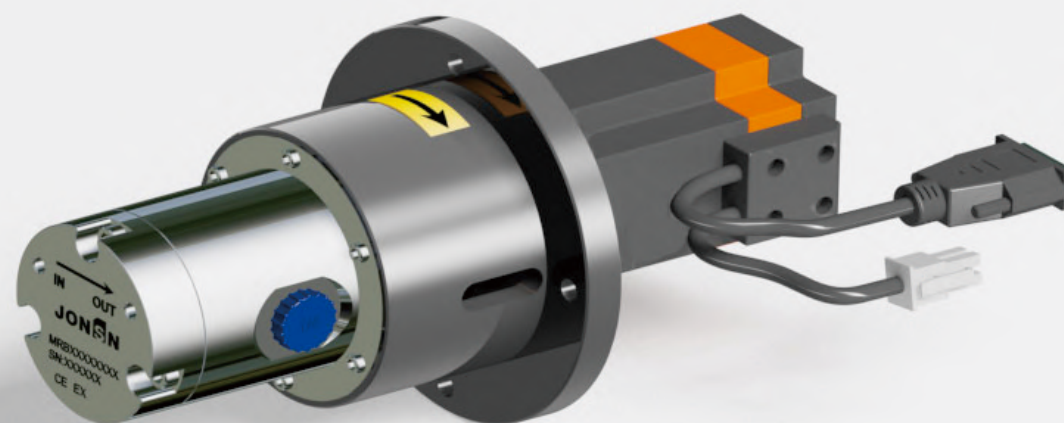
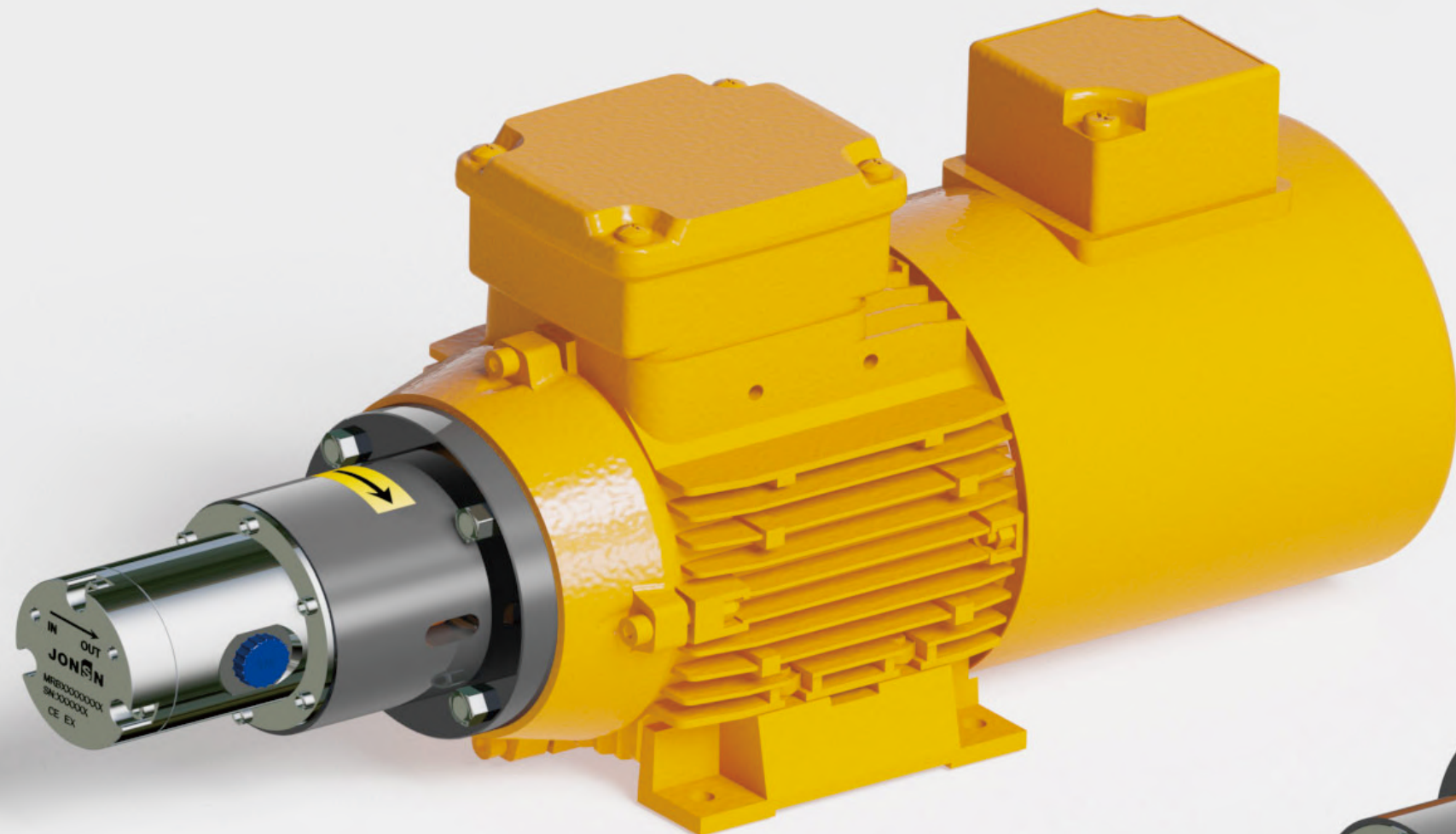
泵头 MRA 12/13
以100mPas. 40°C 油为测试条件



MIRB

SMALL FLOW TYPE
GEAR PUMP

MRB系列



MRB MICRO GEAR PUMPS

小流量型 Small flow type

可解决工况

流量400ml-4800ml/min

工作压差0.5-25bar

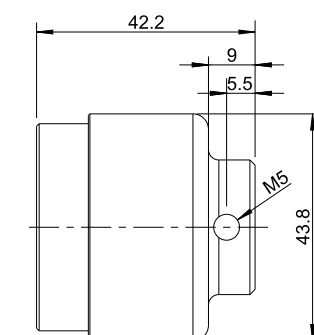
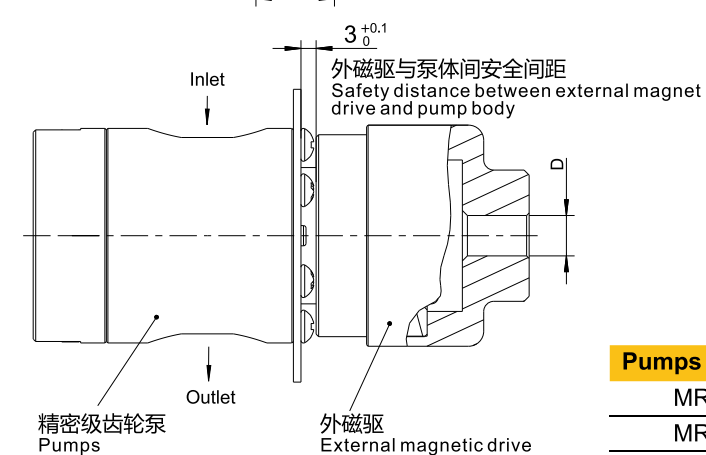
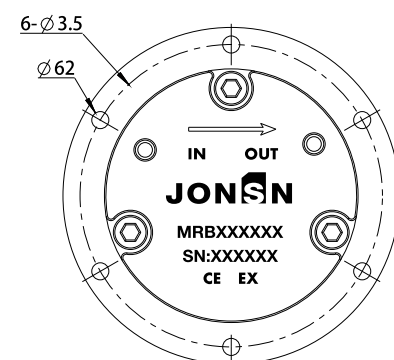
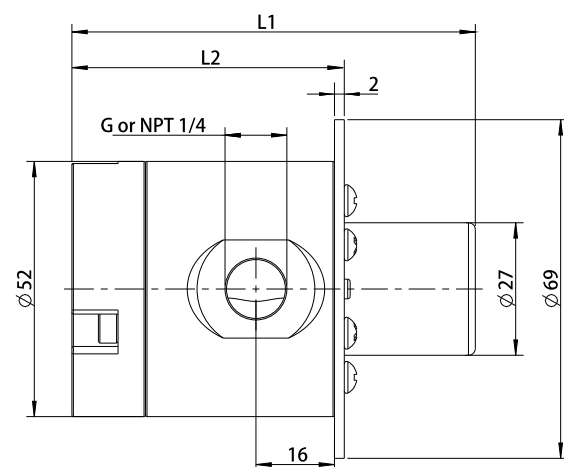
粘度0.4-3000m.Pas (近似于水)

Resolvable working conditions

Flow 400ml-4800ml/min

Working pressure difference 0.5-25bar

Viscosity 0.4-3000m.Pas (approximately water)

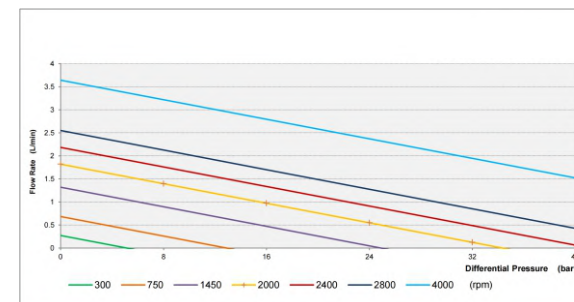


D
5
6
8
11
14
19

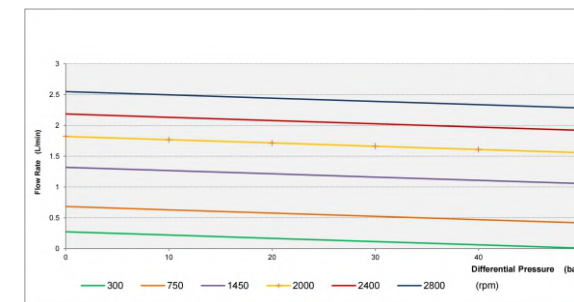
Pumps order NO.	L1	L2
MRB 10/16	82.2	55.5
MRB 12/16		
MRB 17/16	87.2	60.5
MRB 19/16		

性能曲线 | Performance curve 通过调节电机转速 实现流量快慢 线性度高

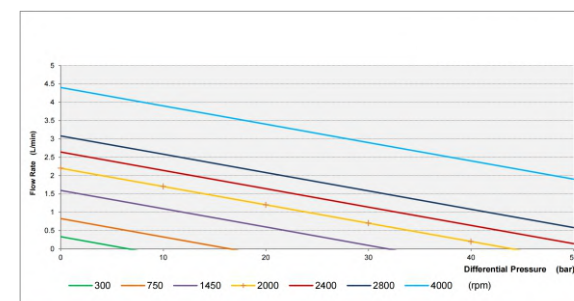
泵头 MRB 10/16
以1mPas. 40°C 水为测试条件



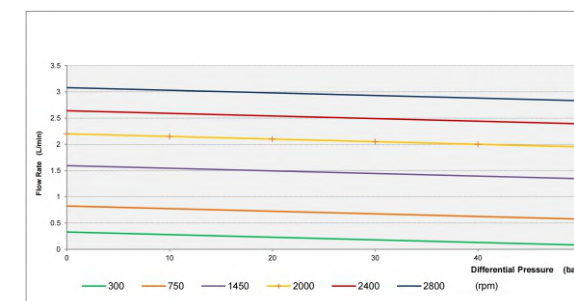
泵头 MRB 10/16
以100mPas. 40°C 油为测试条件



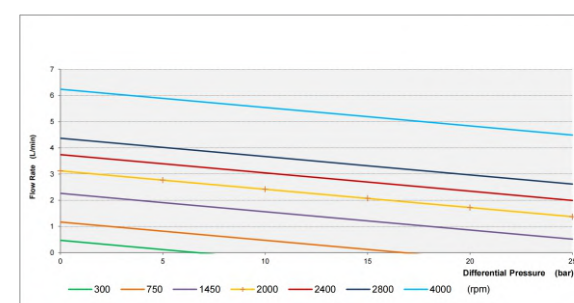
泵头 MRB 12/16
以1mPas. 40°C 水为测试条件



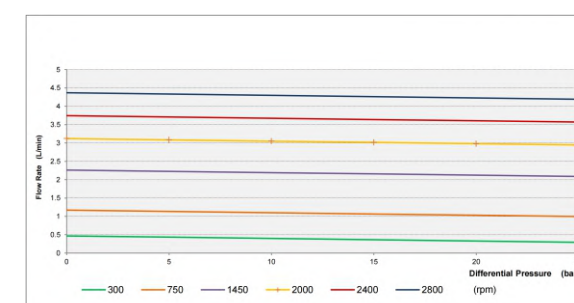
泵头 MRB 12/16
以100mPas. 40°C 油为测试条件



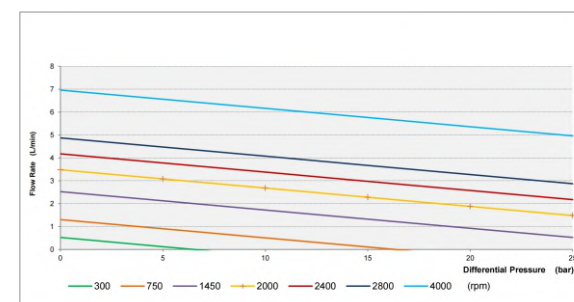
泵头 MRB 17/16
以1mPas. 40°C 水为测试条件



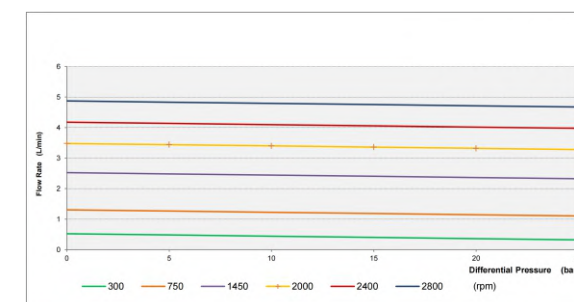
泵头 MRB 17/16
以100mPas. 40°C 油为测试条件



泵头 MRB 19/16
以1mPas. 40°C 水为测试条件



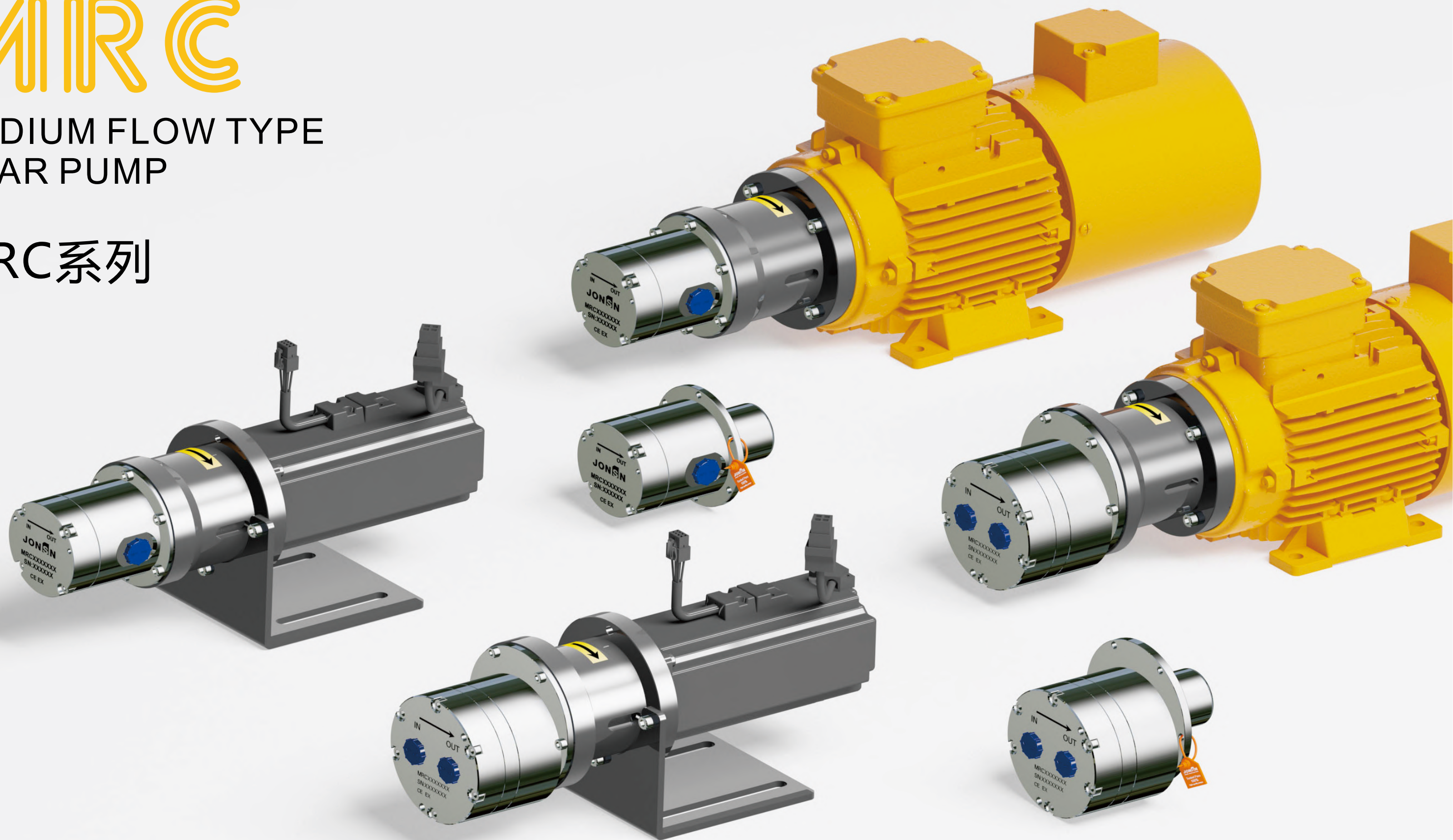
泵头 MRB 19/16
以100mPas. 40°C 油为测试条件





MEDIUM FLOW TYPE
GEAR PUMP

MRC系列



MRC MICRO GEAR PUMPS

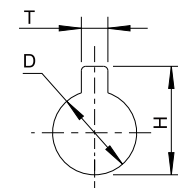
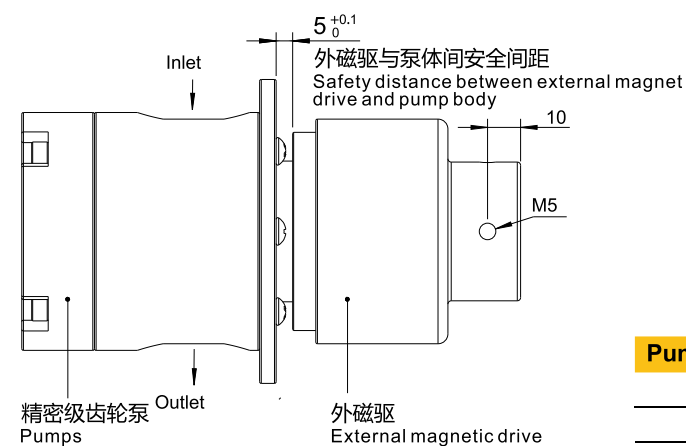
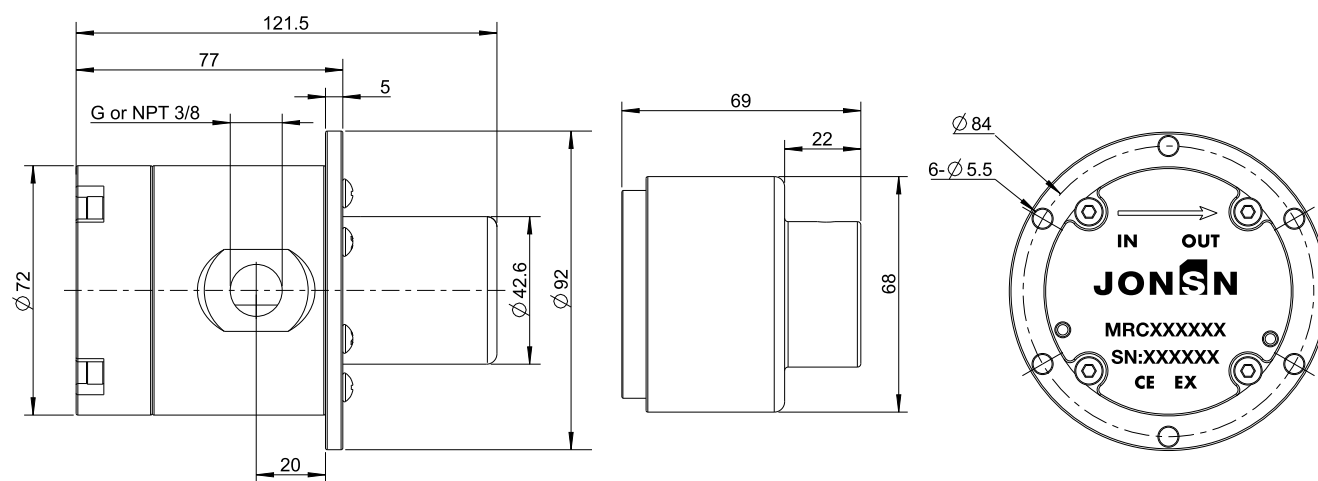
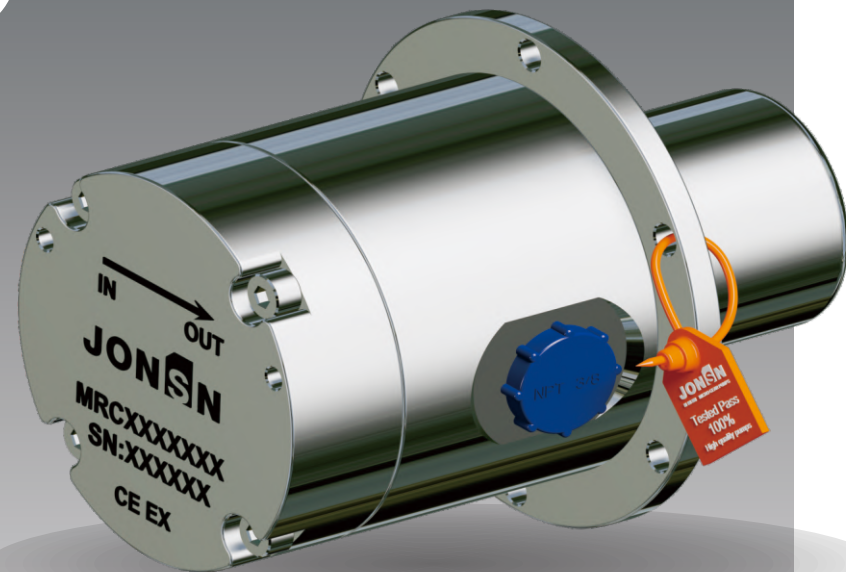
中等流量型 | MRC15/22
MRC20/22
Medium flow type

可解决工况

流量0.6-6.7 L/min
工作压差0.5-25bar
粘度0.4-3000m.Pas (近似于水)

Resolvable working conditions

Flow 0.8L-14L/min
Working pressure difference 0.5-25bar
Viscosity 0.4-3000m.Pas (approximately water)



D	H	T
14	17	5
19	22.5	6
24	28	8
28	32	8

Pumps order NO.	泵头外形尺寸统一 Pumps head uniform dimensions
MRC 15/22	
MRC 20/22	

MRC MICRO GEAR PUMPS

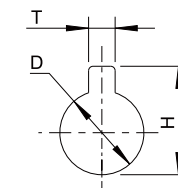
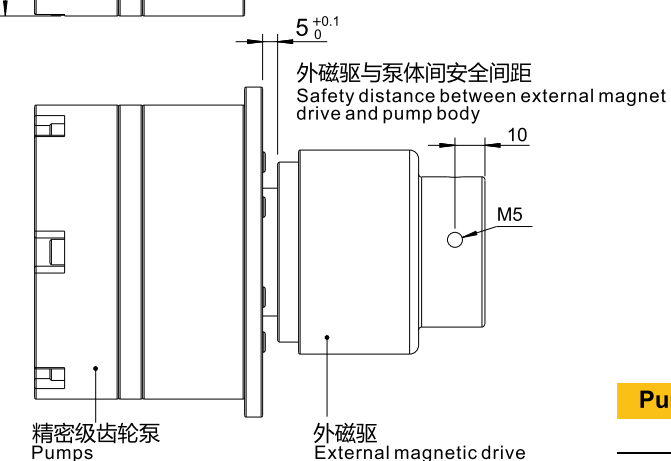
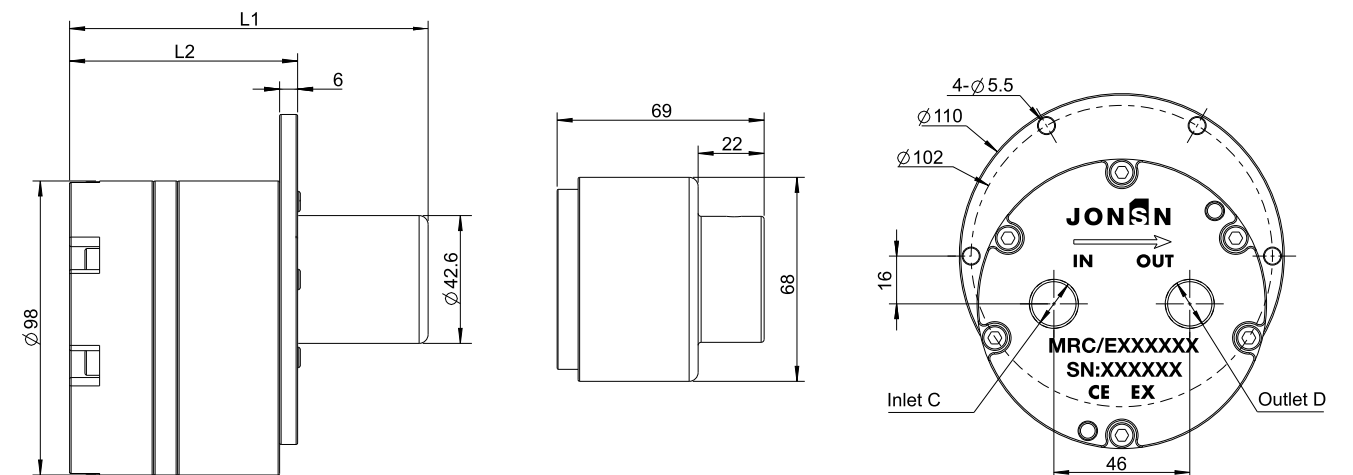
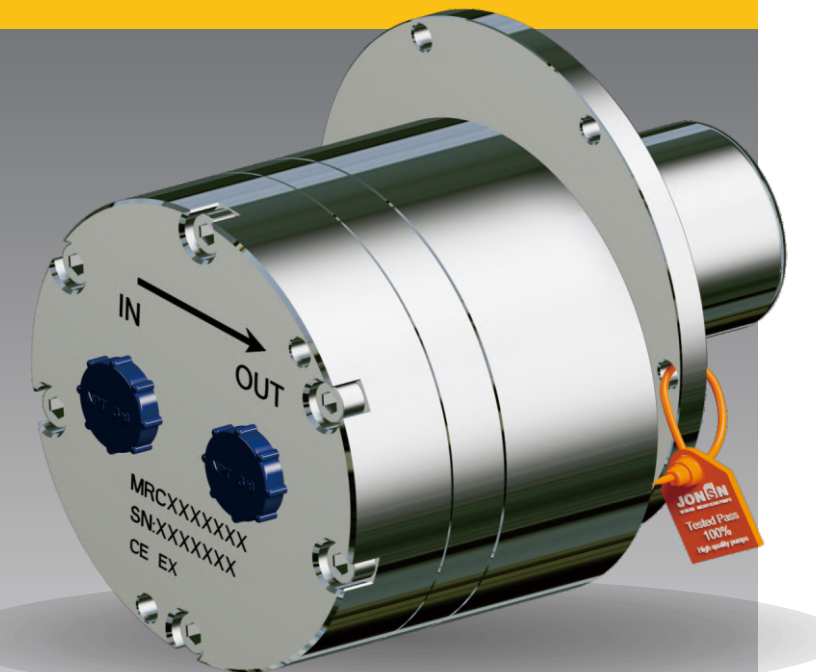
中等流量型 | MRC8/37
MRC12/37
Medium flow type

可解决工况

流量0.8L-14L/min
工作压差0.5-25bar
粘度0.4-3000m.Pas (近似于水)

Resolvable working conditions

Flow 0.8L-14L/min
Working pressure difference 0.5-25bar
Viscosity 0.4-3000m.Pas (approximately water)



D	H	T
14	17	5
19	22.5	6
24	28	8
28	32	8

Pumps order NO.	L1	L2	C	D
MRC 8/37	119.5	75.5	G or NPT 3/8	
MRC 12/37				

MICRO GEAR PUMPS

MRC15/22
MRC20/22

性能曲线
Performance curve



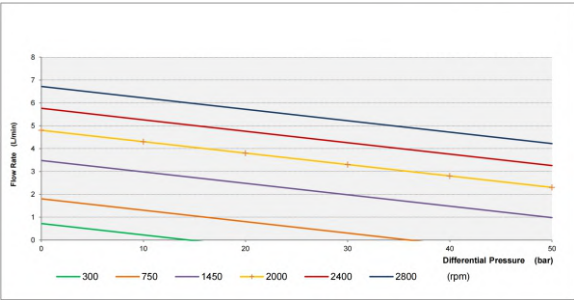
MICRO GEAR PUMPS

MRC8/37
MRC12/37

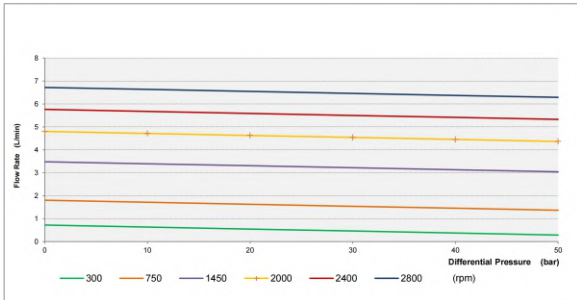
性能曲线
Performance curve



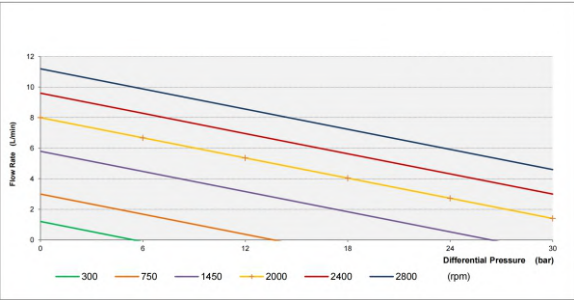
泵头 MRC 15/22
以1mPas. 40°C 水为测试条件



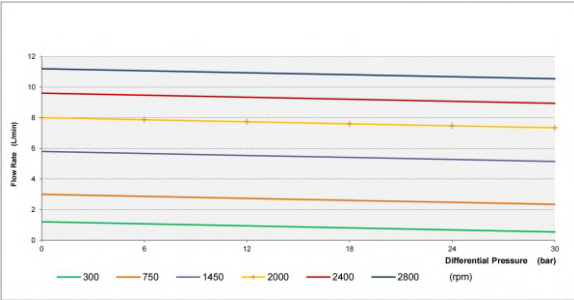
泵头 MRC 15/22
以100mPas. 40°C 油为测试条件



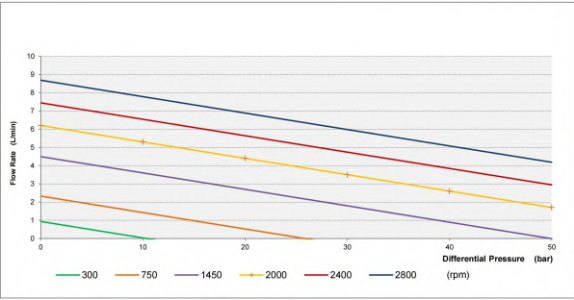
泵头 MRC 8/37
以1mPas. 40°C 水为测试条件



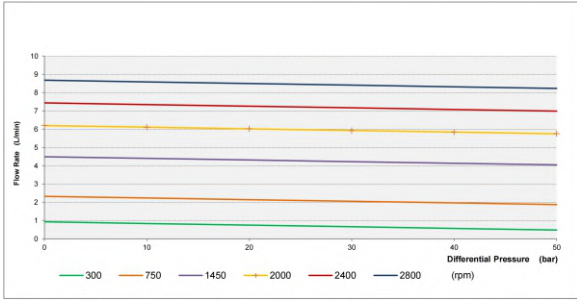
泵头 MRC 8/37
以100mPas. 40°C 油为测试条件



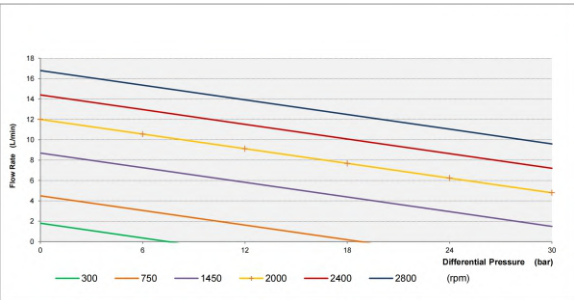
泵头 MRC 20/22
以1mPas. 40°C 水为测试条件



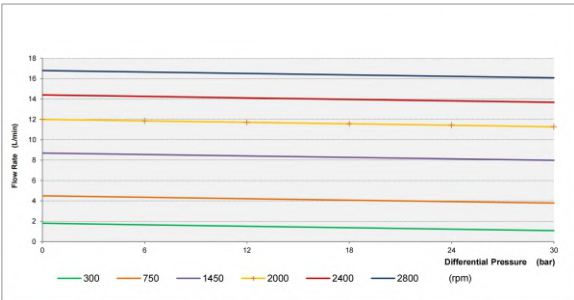
泵头 MRC 20/22
以100mPas. 40°C 油为测试条件



泵头 MRC 12/37
以1mPas. 40°C 水为测试条件



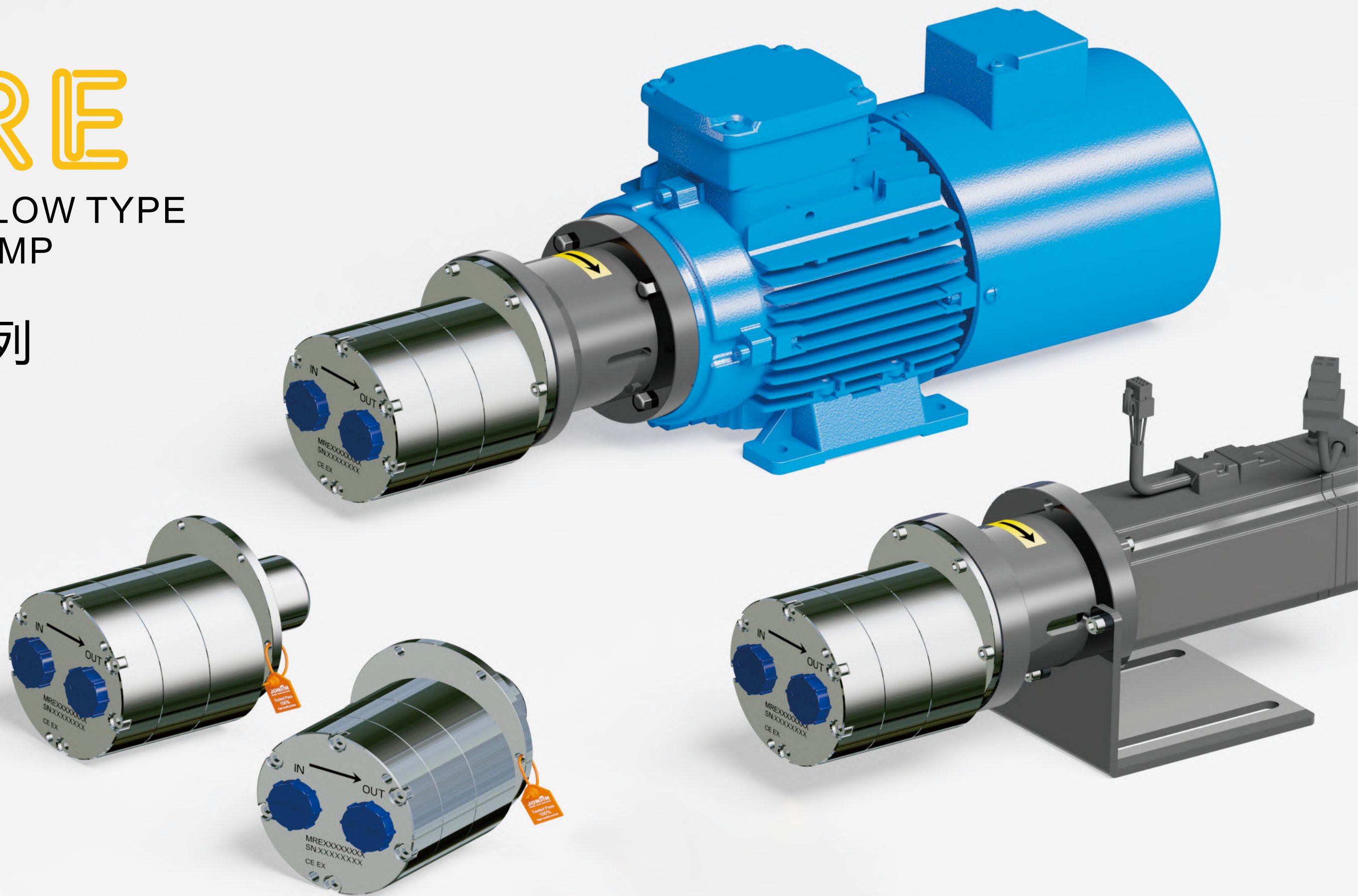
泵头 MRC 12/37
以100mPas. 40°C 油为测试条件



MRE

LARGE FLOW TYPE
GEAR PUMP

MRE系列



MRE

MICRO GEAR PUMPS

大流量型 Large flow type

可解决工况

流量4L-48L/min

工作压差0.5-25bar

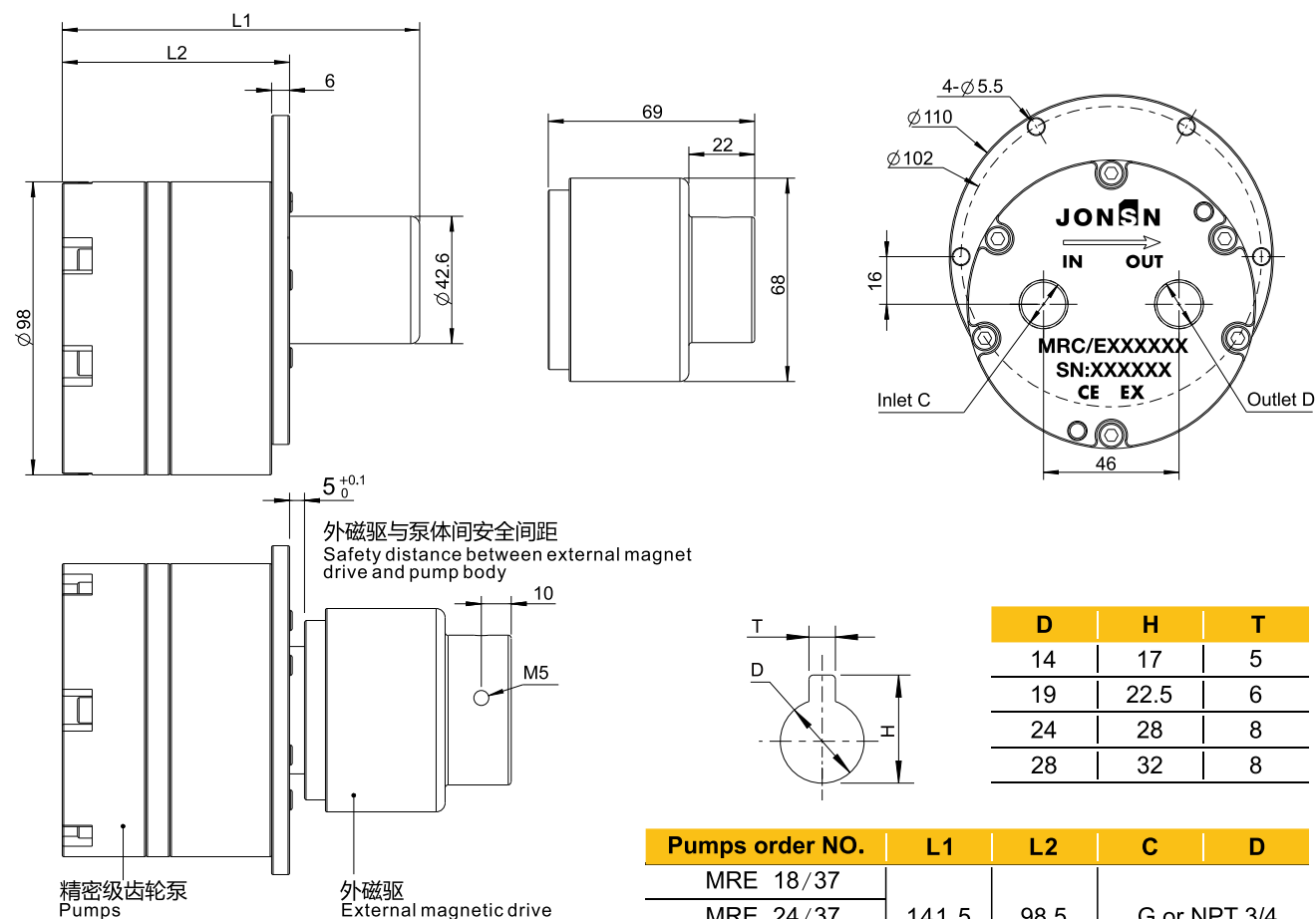
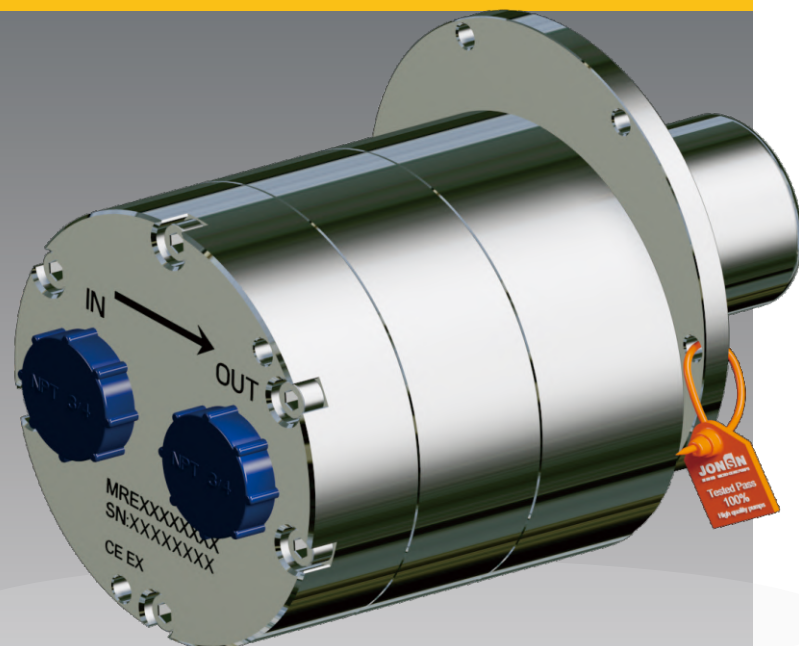
粘度0.4-3000m.Pas (近似于水)

Resolvable working conditions

Flow rate 4L-48L/min

Working pressure difference 0.5-25bar

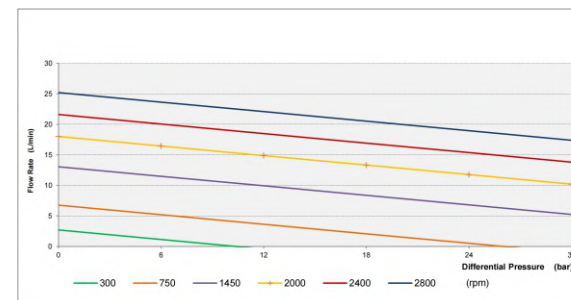
Viscosity 0.4-3000m.Pas (approximately water)



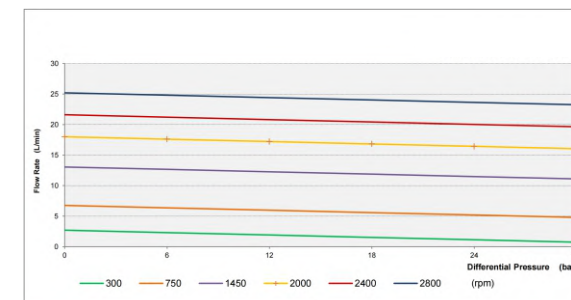
Pumps order NO.	L1	L2	C	D
MRE 18/37	141.5	98.5	G or NPT 3/4	
MRE 24/37				
MRE 34/37				

性能曲线 | Performance curve
通过调节电机转速，实现流量快慢，线性度高。

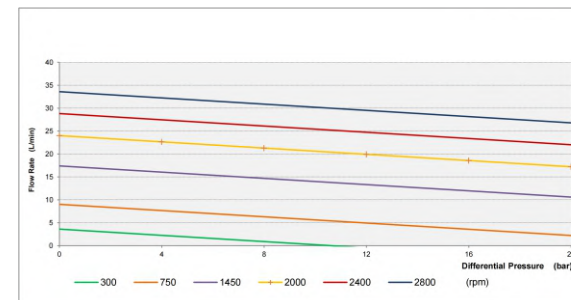
泵头 MRE 18/37
以1mPas. 40°C 水为测试条件



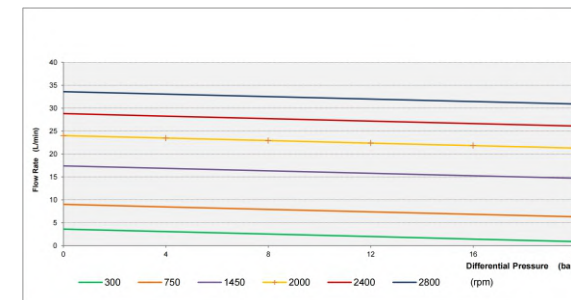
泵头 18/37
以100mPas. 40°C 油为测试条件



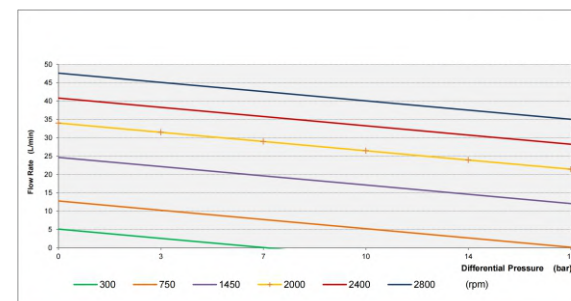
泵头 MRE 24/37
以1mPas. 40°C 水为测试条件



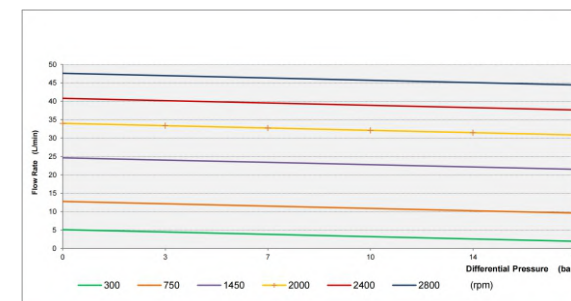
泵头 24/37
以100mPas. 40°C 油为测试条件



泵头 MRE 34/37
以1mPas. 40°C 水为测试条件



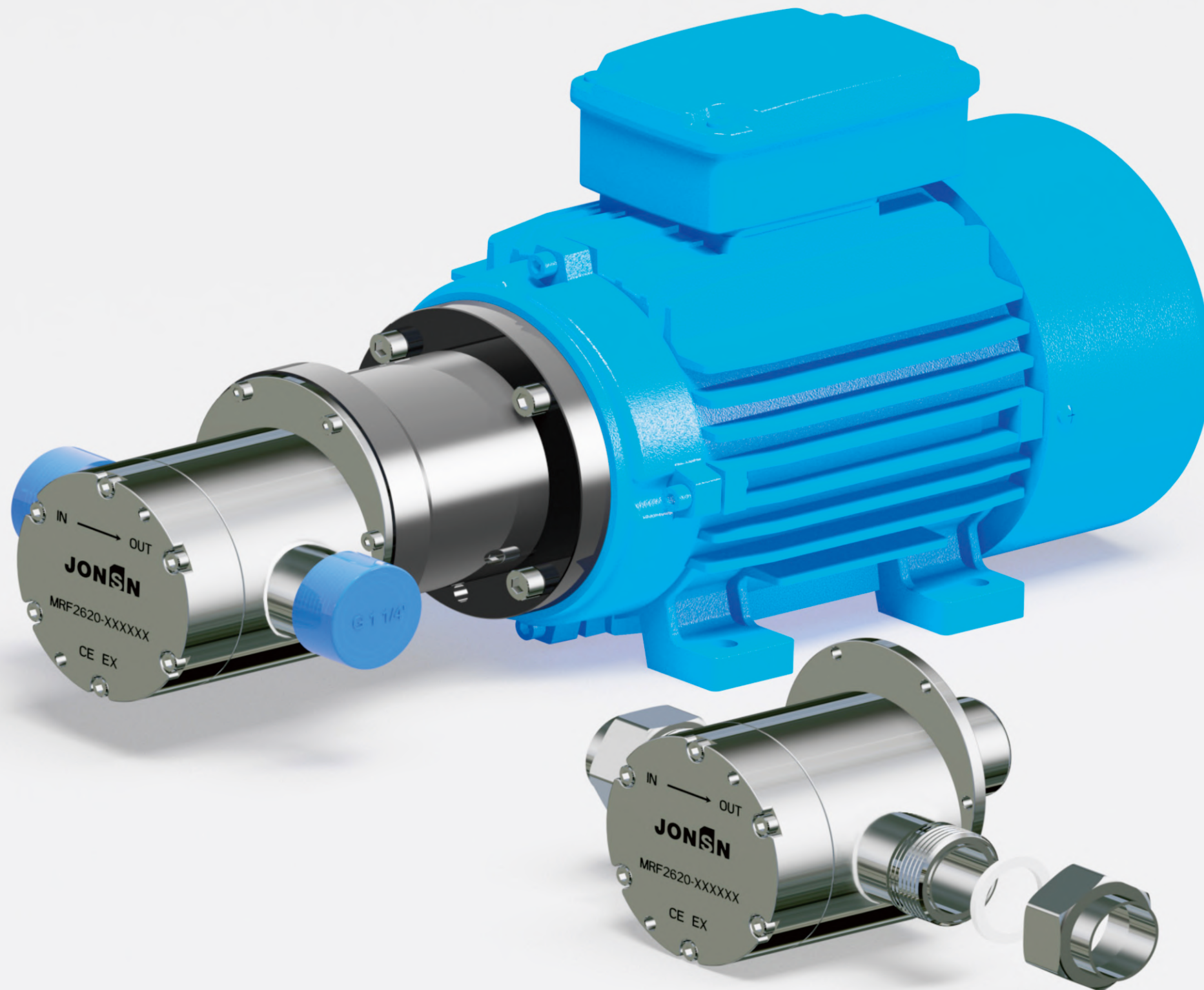
泵头 MRE 34/37
以100mPas. 40°C 油为测试条件



MRF

LARGE FLOW TYPE
GEAR PUMP

MRF系列



MRF

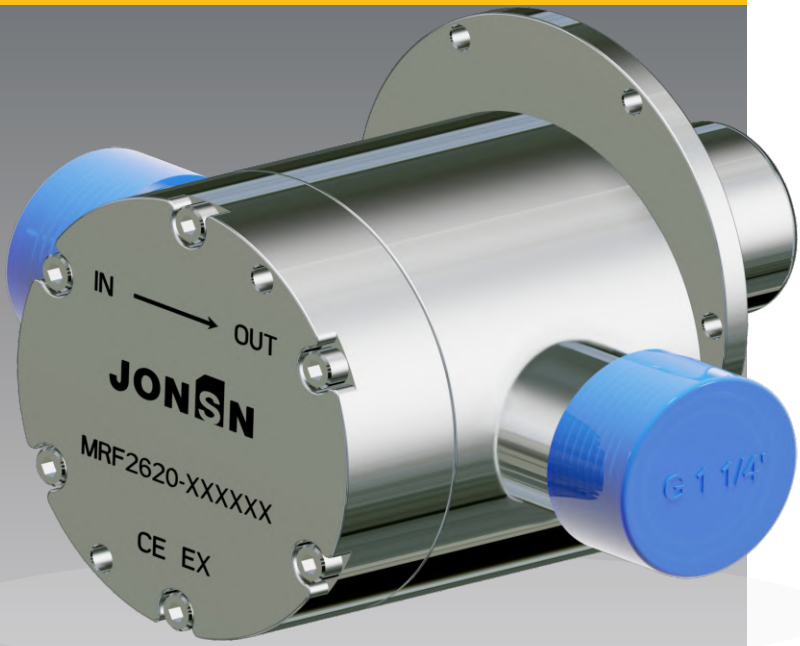
MICRO GEAR PUMPS

大流量型

Large flow type

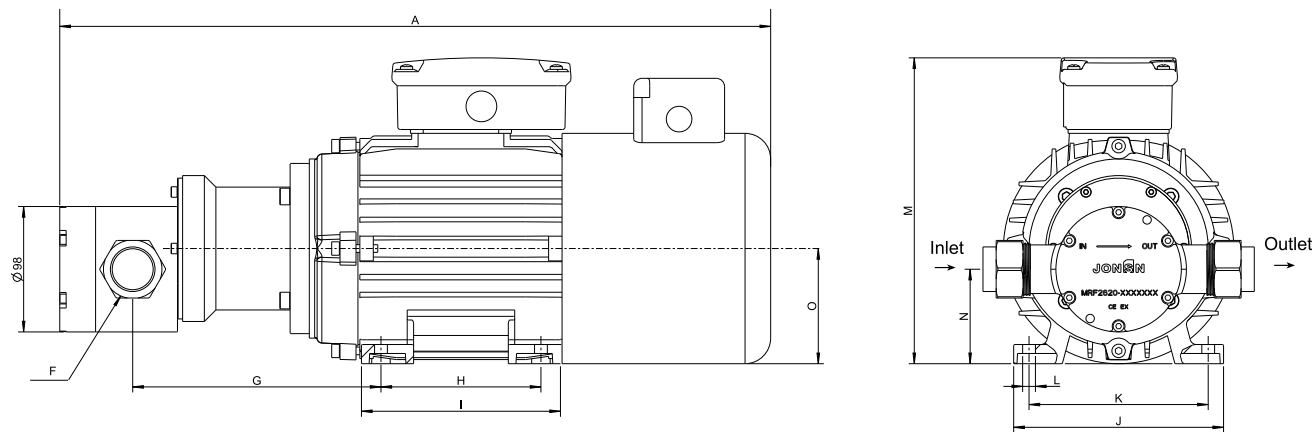
可解决工况
 流量8L-67L/min
 工作压差0.5-14.5bar
 粘度0.4-3000m.Pas (近似于水)

Resolvable working conditions
 Flow rate 8L-64L/min
 Working pressure difference 0.5-14.5bar
 Viscosity 0.4-3000m.Pas (approximately water)



MRF

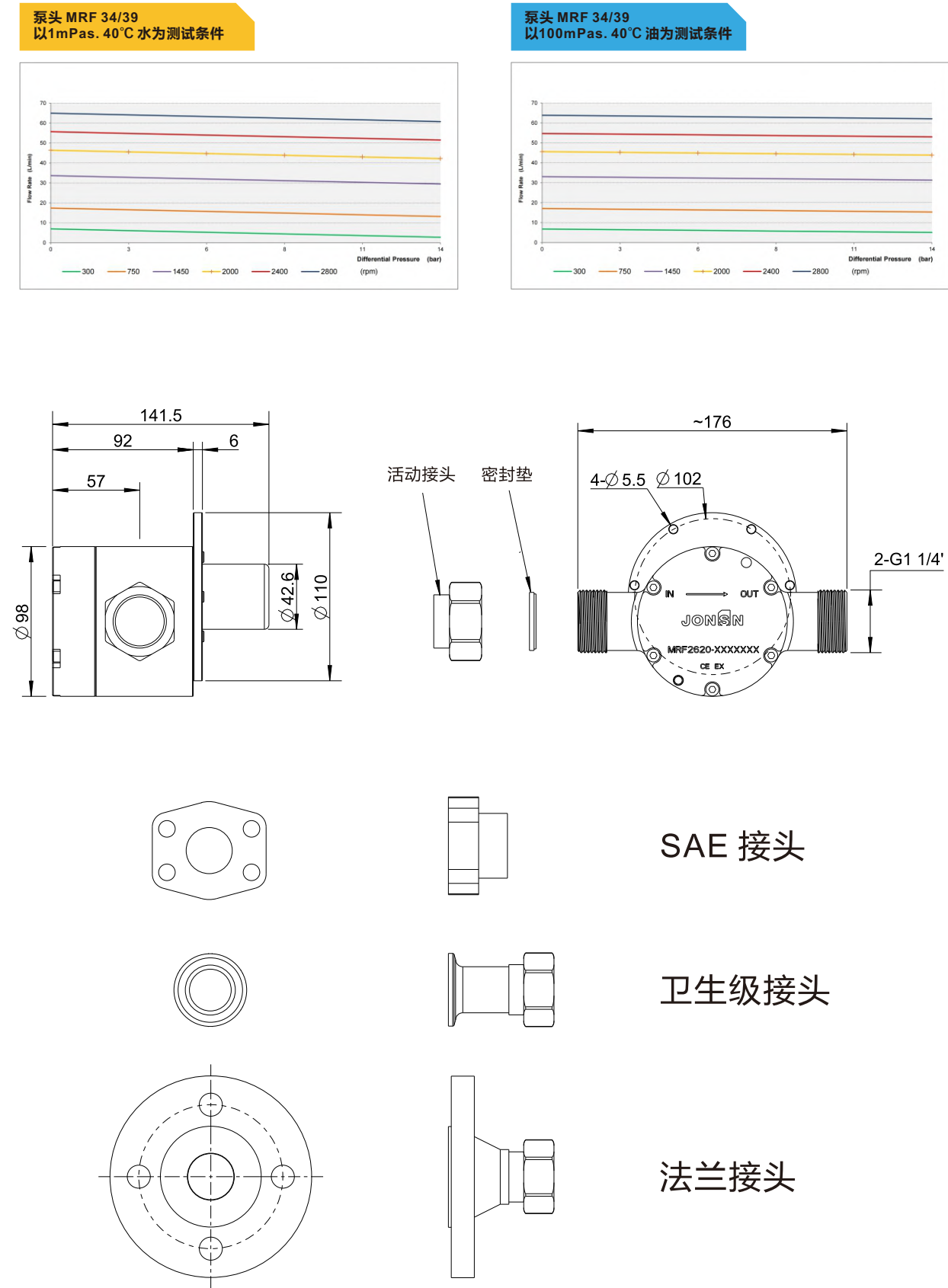
IEC Motor 2.2-3Kw 90L 100L B34



Pumps order NO.	A	F	G	H	I	J	K	L	M	N	O	Q
MRF34/39-90L	~556	2-G11/4"	194	125	156	160	140	4-Φ10	~240	74	90	~212
MRF34/39-100L	~605	2-G11/4"	211	140	173	188	160	4-Φ12	~275	83.8	100	~212

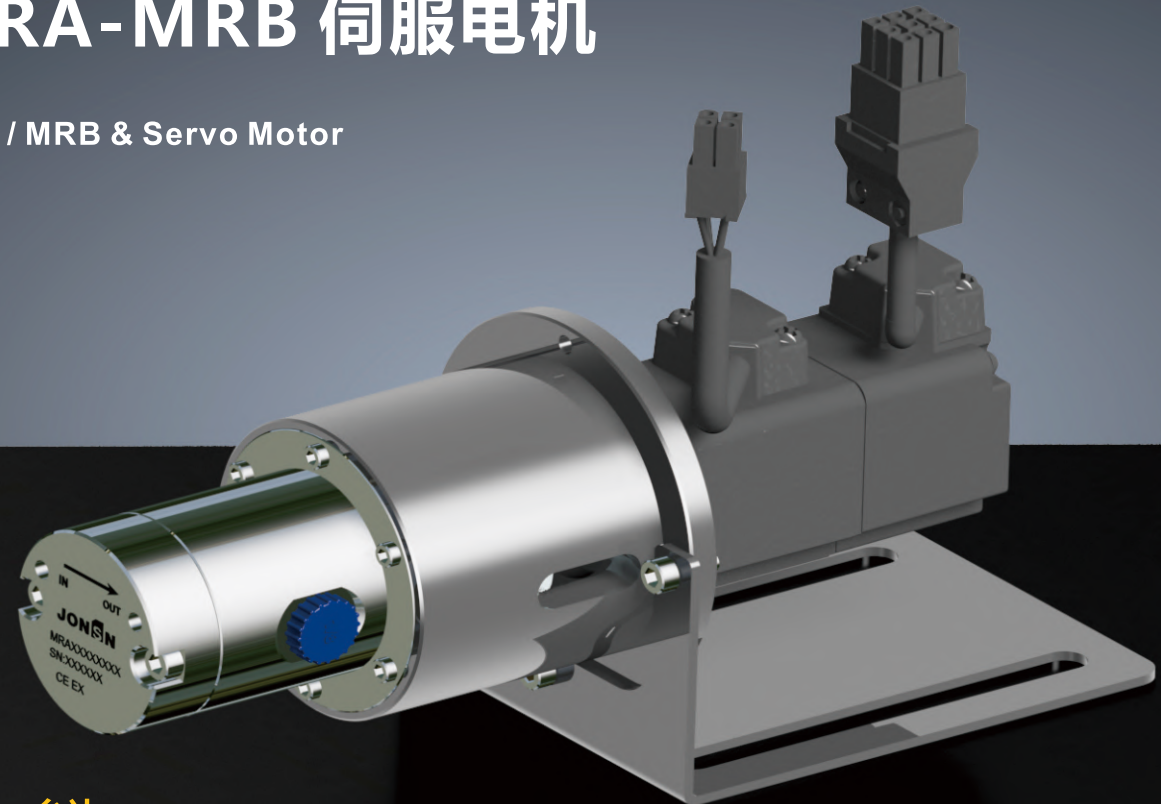
性能曲线 | Performance curve

通过调节电机转速，实现流量快慢，线性度高。



MRA-MRB 伺服电机

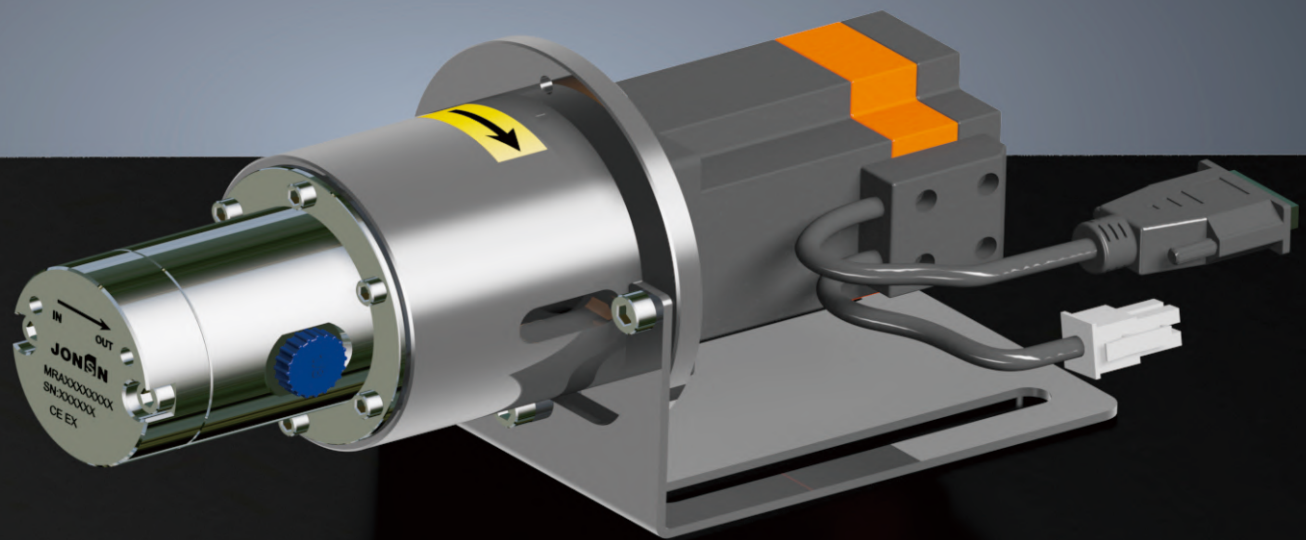
MRA / MRB & Servo Motor



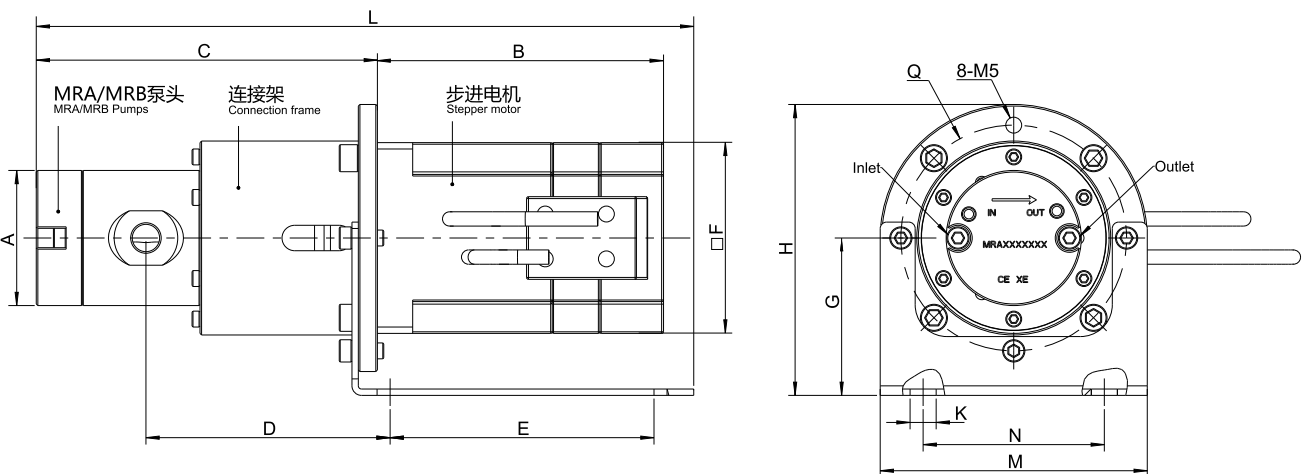
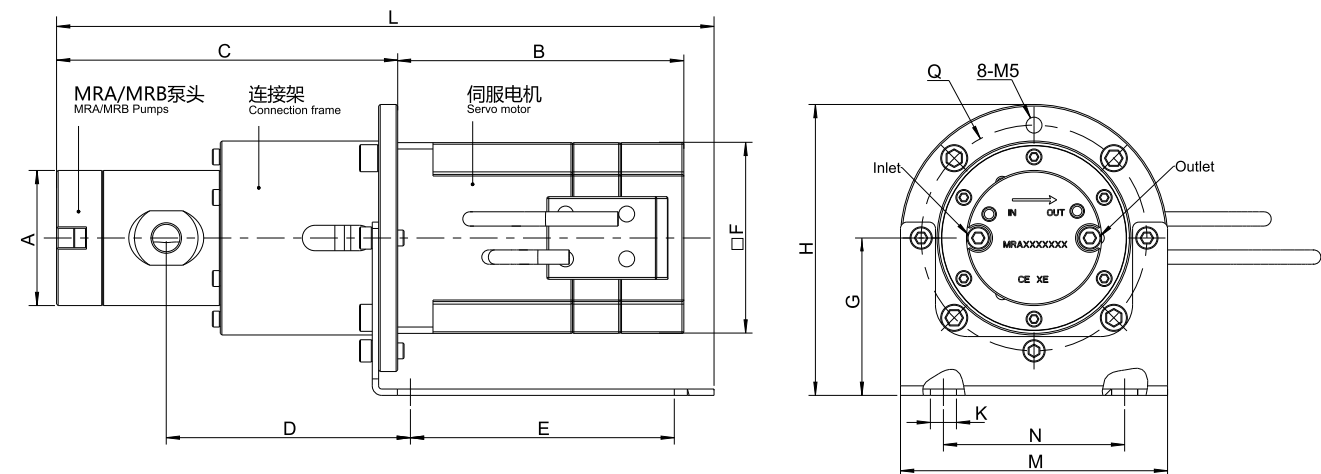
标配：台达
选配：西门子、松下、三菱、安川
其它特种电机可由用户采购，琼森负责安装

MRA-MRB 步进电机

MRA / MRB & Stepper Motor



标配：琼森定制款
选配：42、57、60、86机座



MRA / MRB & Servo motor 220V 100W-400W 0-3000rpm

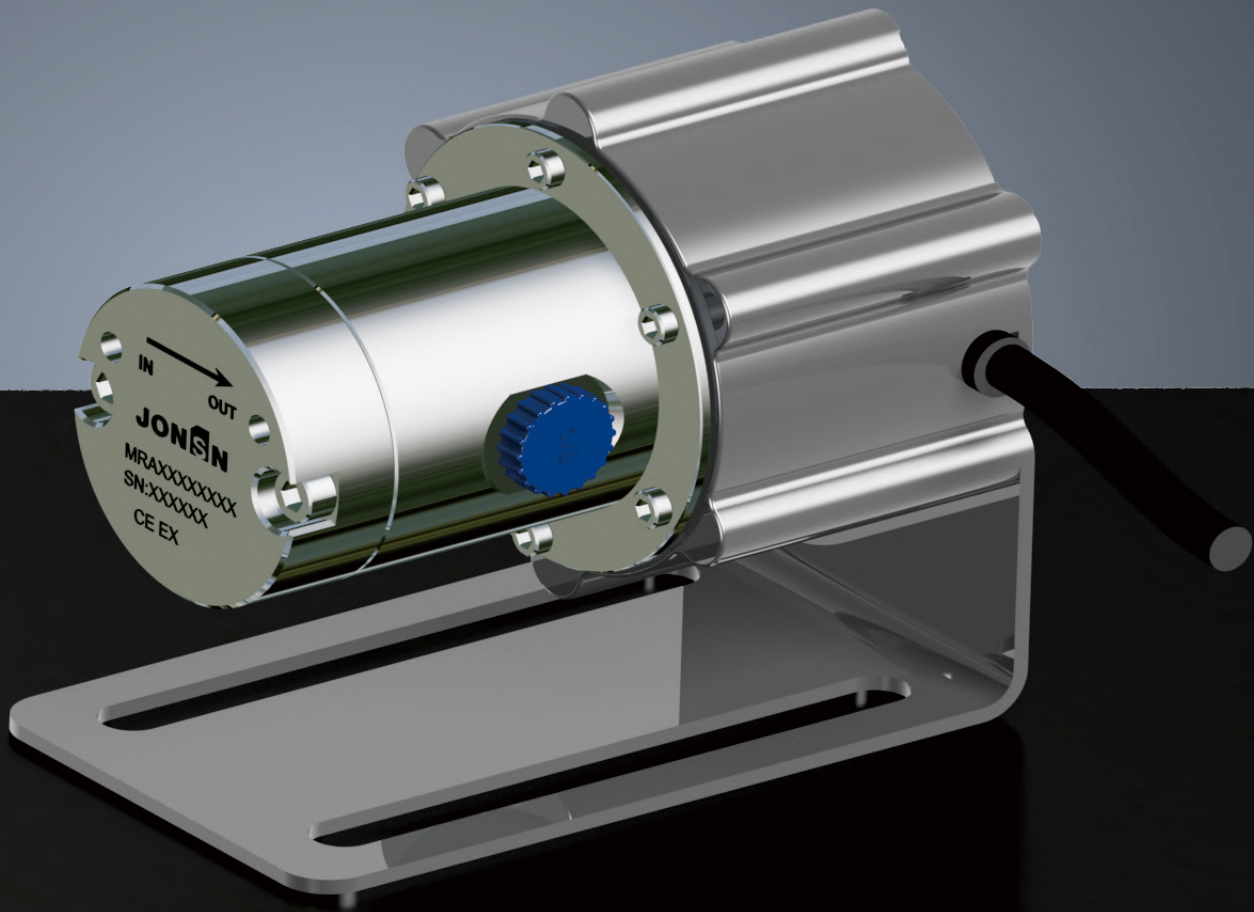
Pumps order NO.	A	B	C	D	E	F	G	H	K	L	M	N	Q
MRA & 100W	42.5	100	111	81	80	40	49.5	~92	8	210	84	57	71
MRA & 200W	42.5	105	117	86	80	60	49.5	~92	8	209	84	57	71
MRB10/16 & 200W	52	105	123	80	80	60	72	~124	8	207	105	80	90
MRB12/16 & 200W	52	105	123	80	80	60	72	~124	8	207	105	80	90
MRB17/16 & 200W	52	105	128	80	80	60	72	~124	8	212	105	80	90
MRB19/16 & 400W	52	130	128	80	80	60	72	~124	8	237	105	80	90

MRA / MRB & Stepper motor 24V 2N.m 0-1500rpm

Pumps order NO.	A	B	C	D	E	F	G	H	K	L	M	N	Q
MRA & □ 60	42.5	90	106	77	80	60	49.5	~92	8	207	84	57	71
MRB10/16 & □ 60	52	90	108.5	70	80	60	72	~124	8	208.5	105	80	90
MRB12/16 & □ 60	52	90	108.5	70	80	60	72	~124	8	208.5	105	80	90
MRB17/16 & □ 60	52	90	113.5	70	80	60	72	~124	8	213.5	105	80	90
MRB19/16 & □ 60	52	90	113.5	70	80	60	72	~124	8	213.5	105	80	90

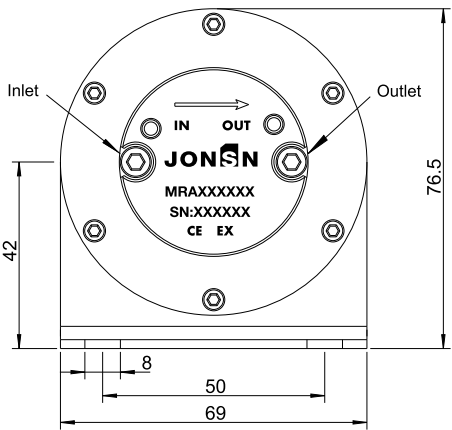
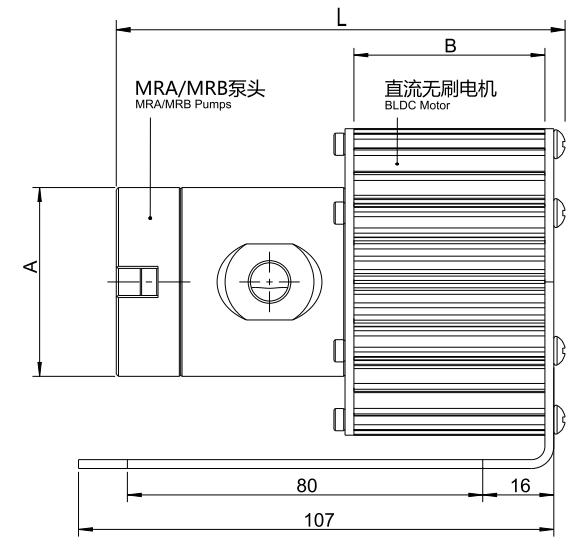
MRA-MRB 无刷电机

MRA / MRB & BLDC Motor



标配：琼森定制款
选配：42、57、60、86、110机座

BLDC Motor MRA/MRB

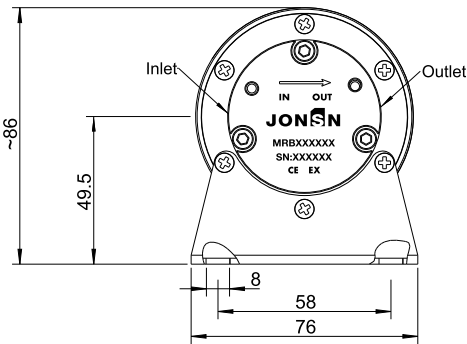
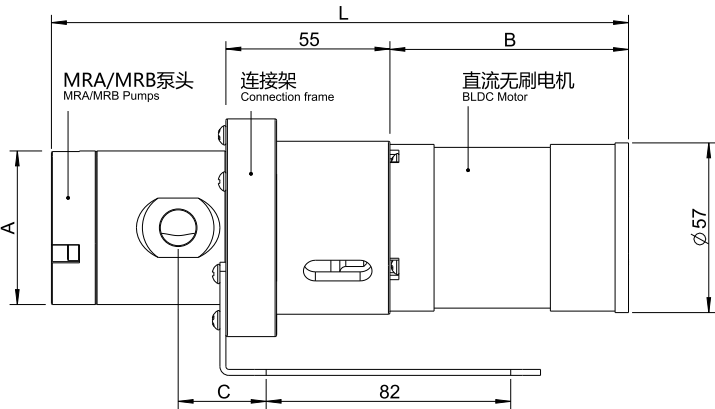


MRA / MRB & BLDC 12V / 24V 40W/70W 150-4000rpm

Pumps order NO.	A	B	L
MRA	42.5	42	102
MRB 10/16 MRB12/16	52	42	104
MRB 17/16 MRB19/16	52	42	109

MRA / MRB & BLDC 12V / 24V 100W 150-4000rpm

Pumps order NO.	A	B	L
MRA	42.5	49	107
MRB 10/16 MRB12/16	52	49	111
MRB 17/16 MRB19/16	52	49	116



MRA / MRB & BLDC 57 24V 120W 150-3000rpm

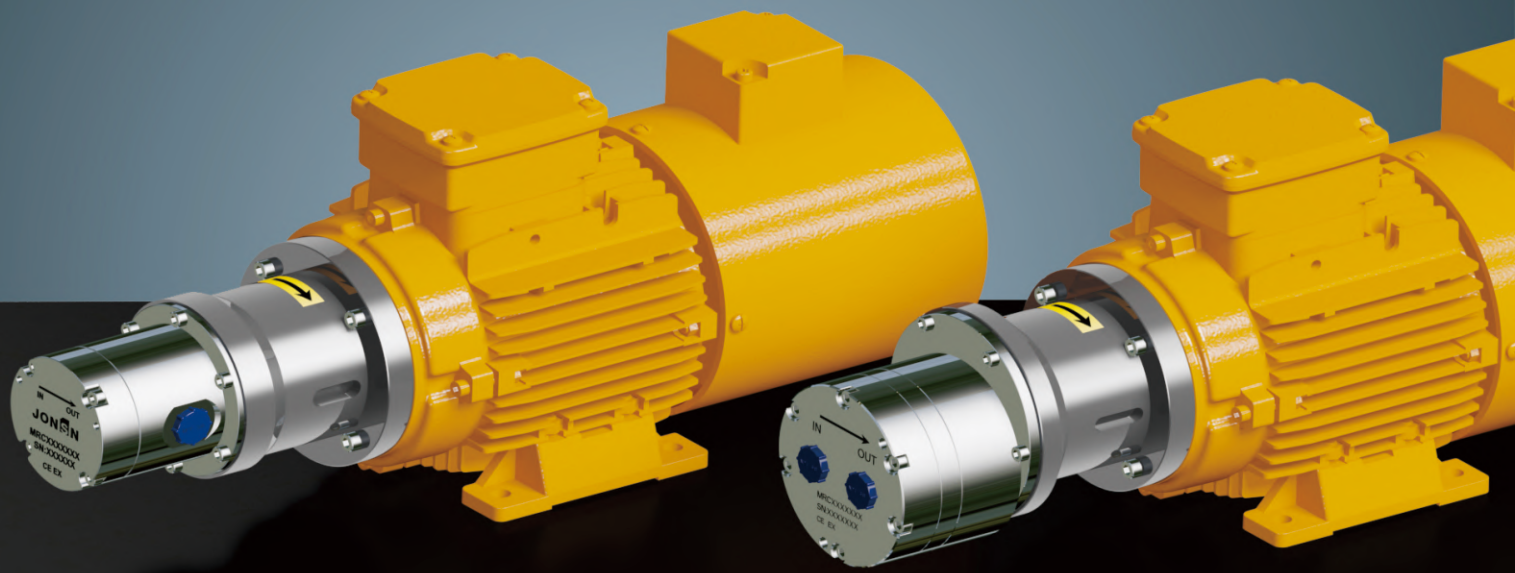
Order NO.	A	B	C	L
MRA	42.5	118	30.5	~225
MRB 10/16 MRB12/16	52	118	29.5	~227
MRB 17/16 MRB19/16	55	118	29.5	~232

MRA / MRB & BLDC 24V 150W 150-3000rpm

Order NO.	A	B	C	L
MRA	42.5	136	30.5	~243
MRB 10/16 MRB12/16	52	136	29.5	~265
MRB 17/16 MRB19/16	55	136	29.5	~250

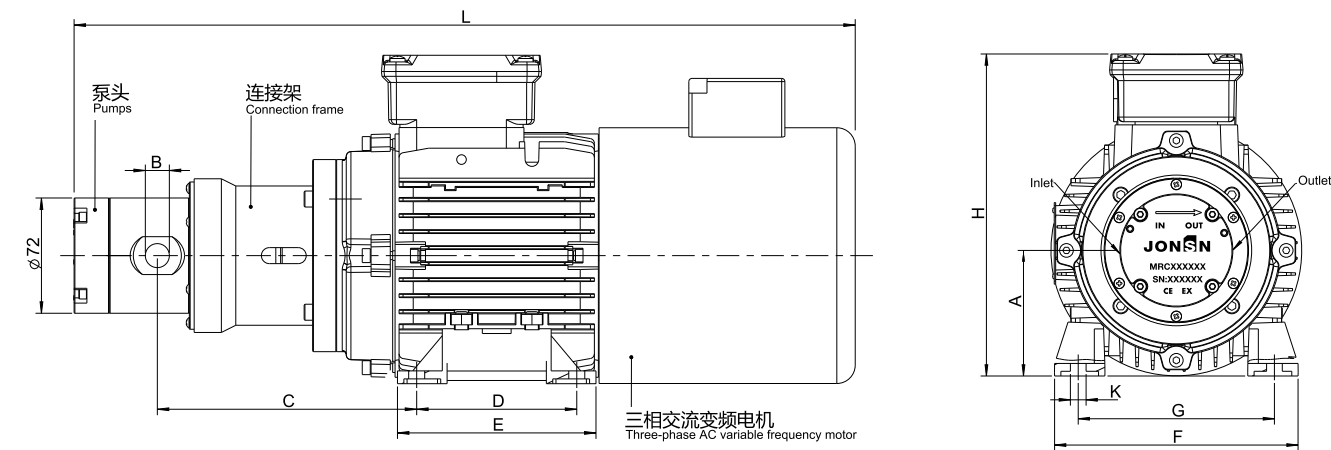
MRC-MRE IEC电机

MRC / MRE & IEC Motor



标配：ABB变频
选配：南阳、皖南、沪新、亨得

IEC Motor MRC15 / 22 MRC20 / 22



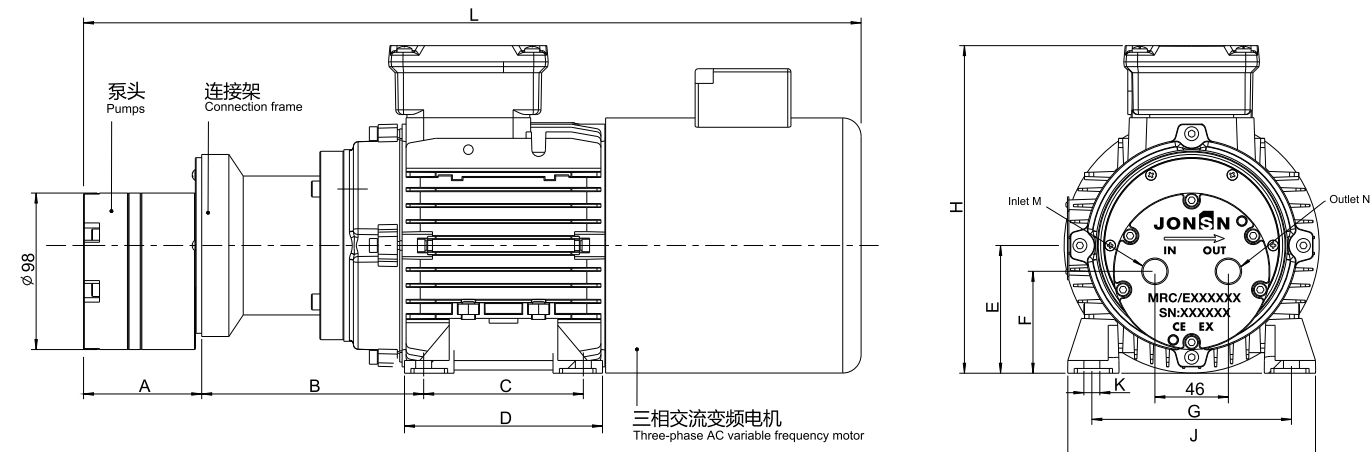
Power & 0.75-1.1Kw 2P 80M B34

Pumps order NO.	A	B	C	D	E	F	G	H	L
MRC 15/22 MRC 20/22	80	G or NPT 3/8	162	100	135	~160	125	~205	~488

Power & 1.5Kw 2P 90L B34

Order NO.	A	B	C	D	E	F	G	H	L
MRC 15/22 MRC 20/22	90	G or NPT 3/8	178	125	165	~175	140	~235	~535

IEC Motor MRC 8/37 MRC12/37 MRE 18/37 MRE 24/37 MRE 34/37



Power & 0.75-1.1Kw 2P 80M B34

Pumps order NO.	A	B	C	D	E	F	G	H	J	K	L	M	N
MRC 15/22 MRC 20/22	74	139	100	135	80	64	125	~ 205	~ 160	4-Ø10	~ 478	G or NPT 3/8	G or NPT 3/8
MRE 18/37 MRE 24/37 MRE34/37	96	139	125	165	90	64	140	~ 235	~ 175	4-Ø10	~ 509	G or NPT 3/4	G or NPT 3/4

Power & 1.5Kw 2P 90L B34

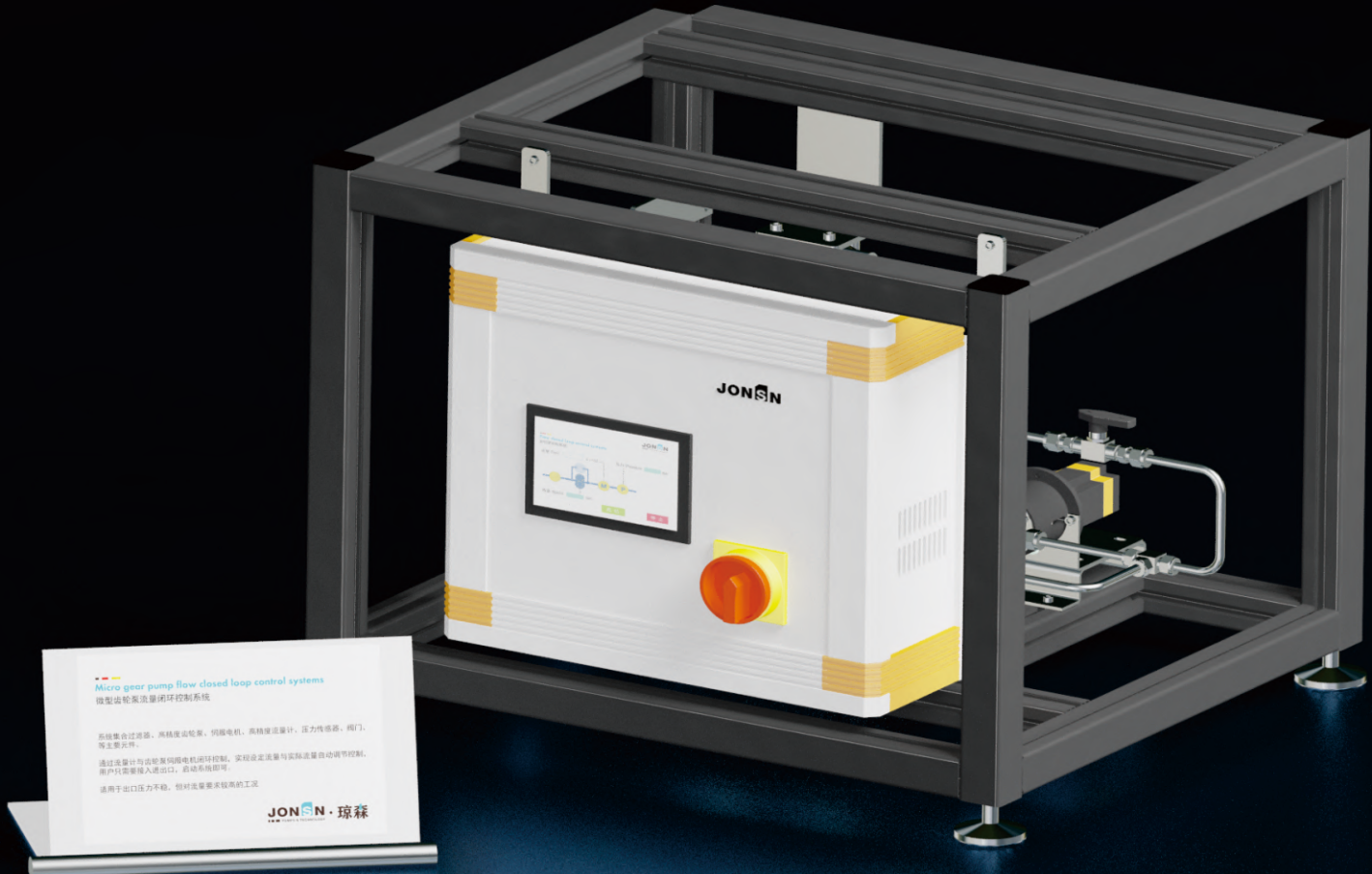
Pumps order NO.	A	B	C	D	E	F	G	H	J	K	L	M	N
MRC 8/37 MRC12/37	74	155	100	135	80	64	125	~ 205	~ 160	4-Ø10	~ 534	G or NPT 3/8	G or NPT 3/8
MRE 18/37 MRE 24/37 MRE34/37	96	155	125	165	90	64	140	~ 235	~ 175	4-Ø10	~ 555	G or NPT 3/4	G or NPT 3/4

Power & 2.2-3Kw 2P 100L B34

MRE 18/37 MRE 24/37 MRE34/37	A	B	C	D	E	F	G	H	J	K	L	M	N
MRE 18/37 MRE 24/37 MRE34/37	96	174	140	180	100	64	160	~ 275	~ 200	4-Ø12	~ 584	G or NPT 3/4	G or NPT 3/4

我们深耕微小流量在线精密输送领域

服务于国内外重点实验室、科研院所、企事业单位等机构，
精密级微型齿轮泵应用于半导体、核工业、特种材料制备、精细化工。



我们具有丰富的流体控制专业知识，
能为您提供专业的微小流量解决方案！

SELECTION PARAMETERS
选型参数

客户编码:
Customer code

公司:
company

姓名:
Name

部门:
Department

地址:
Address

电话/分机:
Extension

传真:
Fax

邮箱:
E-Mail

介质 Medium

名称:
Name

应用领域:
Application areas

浓度:
Concentration

是否易燃易爆:
Whether explosive

密度:
Density

粘度:
Viscosity

介质温度:
Medium temperature

环境温度:
Ambient temperature

固体含量:
Solid content

介质状态:
Media status

☐是
Yes

☐否
No

☐是
Yes

☐否
No

☐软
Soft

☐硬
Hard

☐流动性
Fluidity

☐触变的
Thixotropy

☐粘稠
Sticky

☐固化
Curing

操作条件 Operating conditions

需要的流量:
flow

入口压力: 正压
Inlet pressure

真空度:
Vacuum

L/min或
L/h

正压
Positive pressure or

Suction

Kpa

出口压力(含管道阻力):
Outlet pressure

工作压力:
Working frequency

☐连续工作
Continuous

☐间歇工作
Intermittent

驱动马达 Drive motor

☐单相普通电机
Single phase

☐三相普通/防爆/变频调速电机
Three phase

☐24V直流无刷电机
24V BLDC motor

☐24V步进/220V伺服电机
24V Stepper motor / 220 Servo motor

应用工况 Application conditions

☐无脉动输送
No pulsation in the mouth

☐增压
Pressurization

☐计量喷雾
Metering spray

☐循环
Circulation

☐冷却
Cool down

☐润滑
Lubricating

☐冲洗
Wash

☐其它
Other

您的要求 Your requirements

在这请描述您的运用或写下您的备注:
Please describe your application here or write down your remarks: